

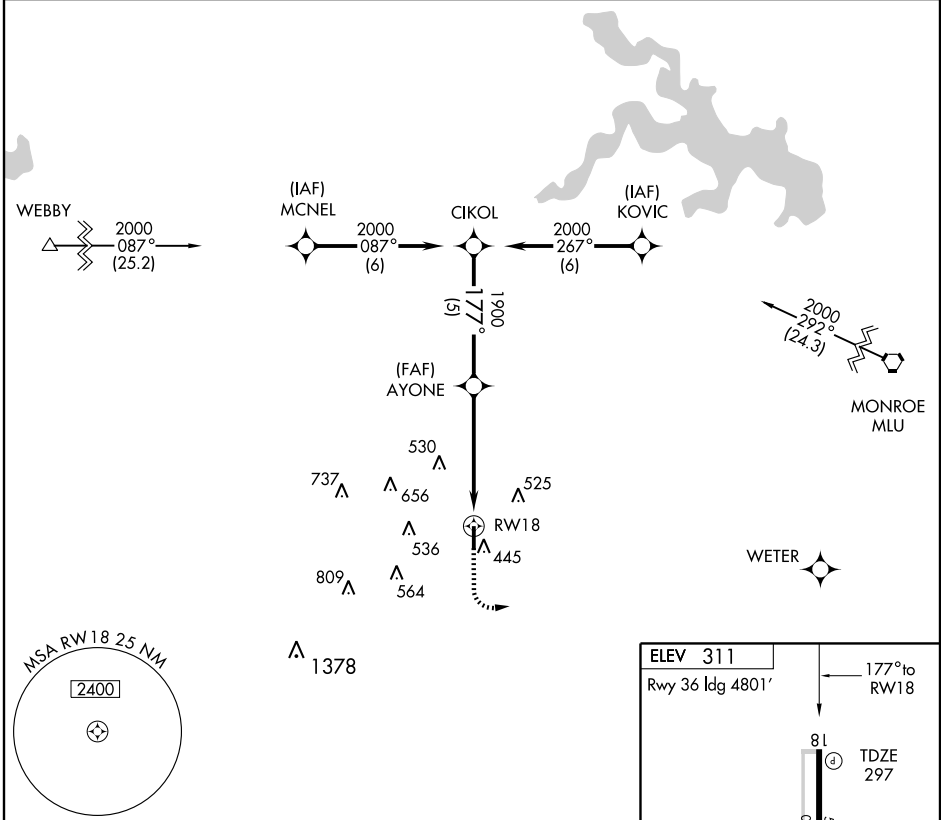
GPS RWY 18
RUSTON RGNL (RSN)

APP CRS 177°	Rwy ldg 5000
	TDZE 297
	Apt Elev 311

NA If local altimeter setting not received on 119.525, obtain local altimeter setting on CTAF; when not received, procedure NA.

MISSED APPROACH: Climb to 2000, then climbing left turn to 3000 direct WETER.

AWOS-3 119.525	MONROE APP CON* 126.9 307.9	CLNC DEL 118.8	UNICOM 122.7 (CTAF)
--------------------------	---------------------------------------	--------------------------	-------------------------------



SC-4, 22 OCT 2009 to 19 NOV 2009

SC-4, 22 OCT 2009 to 19 NOV 2009

