

CLARKSVILLE, VIRGINIA

AL-9200 (FAA)

VORTAC SBV 110.4 Chan 41	APP CRS 107°	Rwy Idg TDZE Apt Elev	N/A N/A 421
--	------------------------	-----------------------------	--

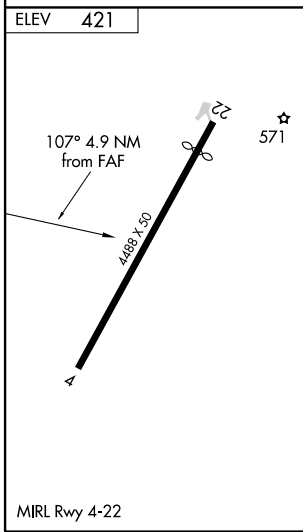
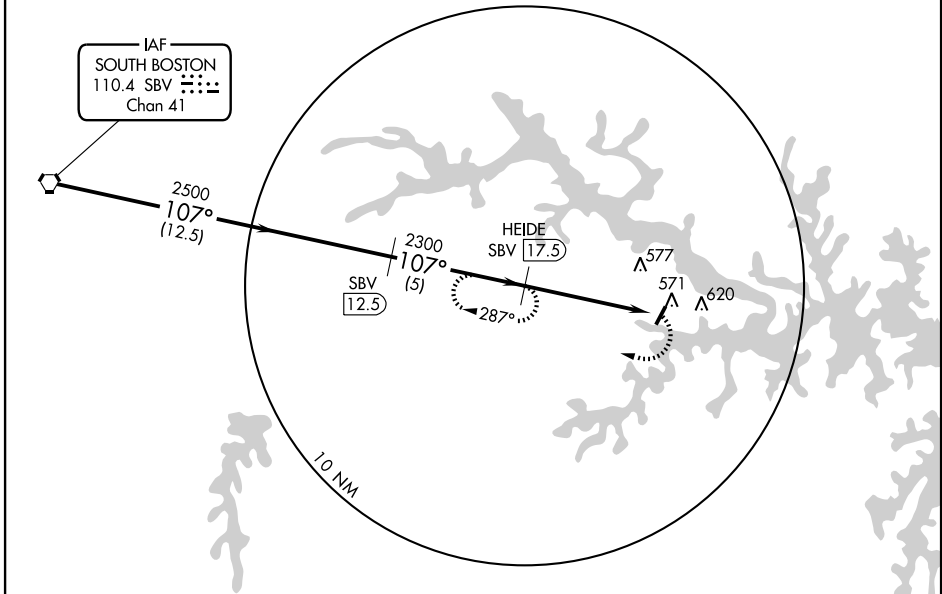
VOR/DME-A

CLARKSVILLE/LAKE COUNTRY REGIONAL (W63)

<p>▼ Use Mecklenburg-Brunswick Rgnl, VA altimeter setting.</p> <p>▲ NA</p>	<p>MISSED APPROACH: Climbing right turn to 2300 via SBV R-107 to HEIDE/ 17.5 DME and hold.</p>
<p>WASHINGTON CENTER 118.75 377.1</p>	<p>CTAF 122.9</p>

NE-3, 22 OCT 2009 to 19 NOV 2009

NE-3, 22 OCT 2009 to 19 NOV 2009



VORTAC	3000	2500	2300	2300	HEIDE SBV 17.5
	Procedure Turn NA	SBV 12.5	HEIDE SBV 17.5	SBV R-107	SBV 22.5
CATEGORY	A	B	C	D	
CIRCLING	1000-1 579 (600-1)	1040-1 619 (700-1)	1040-1¾ 619 (700-1¾)	1040-2 619 (700-2)	

CLARKSVILLE, VIRGINIA
Orig 09295

CLARKSVILLE/LAKE COUNTRY REGIONAL (W63)
36°36'N - 78°34'W
VOR/DME-A