

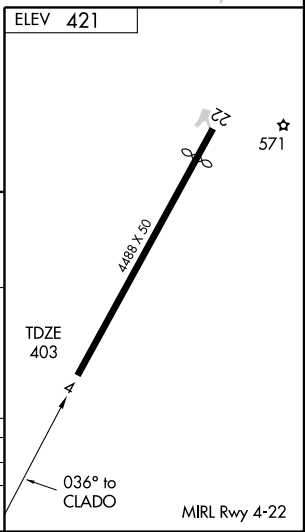
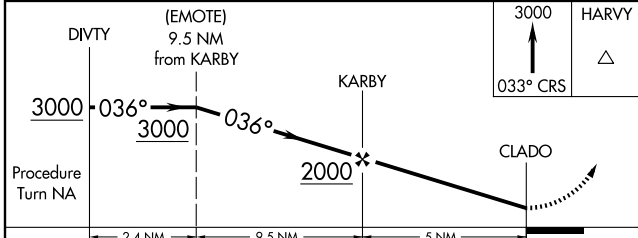
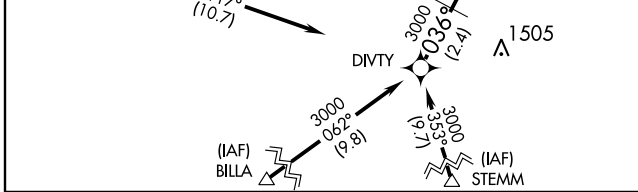
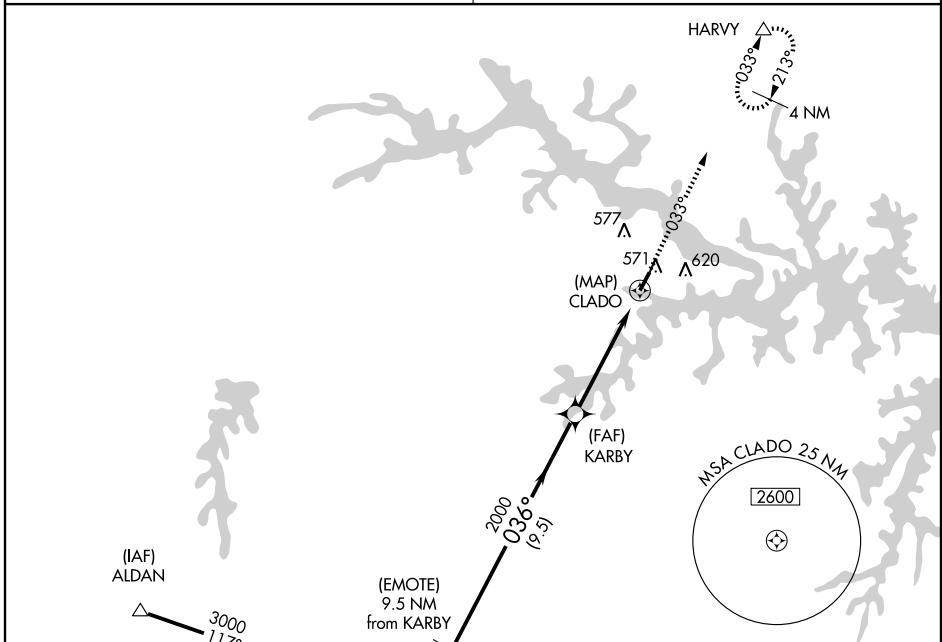
# GPS RWY 4

CLARKSVILLE/LAKE COUNTRY REGIONAL (W63)

APP CRS <b>036°</b>	Rwy Idg <b>4488</b>
	TDZE <b>403</b>
	Apt Elev <b>421</b>

<p><b>▼</b> Use Mecklenburg-Brunswick Rgnl, VA altimeter setting.</p> <p><b>▲</b> NA Procedure not authorized at night.</p>	<p>MISSED APPROACH: Climb to 3000 via 033° course to HARVY WP and hold.</p>
---	---

<p>WASHINGTON CENTER <b>118.75 377.1</b></p>	<p>CTAF <b>122.9</b></p>
--	--------------------------



CATEGORY	A	B	C	D
S-4	820-1 417 (400-1)		820-1¼ 417 (400-1¼)	
CIRCLING	1000-1 579 (600-1)	1040-1 619 (700-1)	1040-1¾ 619 (700-1¾)	1040-2 619 (700-2)

# GPS RWY 4

NE-3, 22 OCT 2009 to 19 NOV 2009

NE-3, 22 OCT 2009 to 19 NOV 2009