

WAAS CH 45914 W09A	APP CRS 093°	Rwy Idg TDZE Apt Elev	5012 112 112
--	------------------------	-----------------------------	---

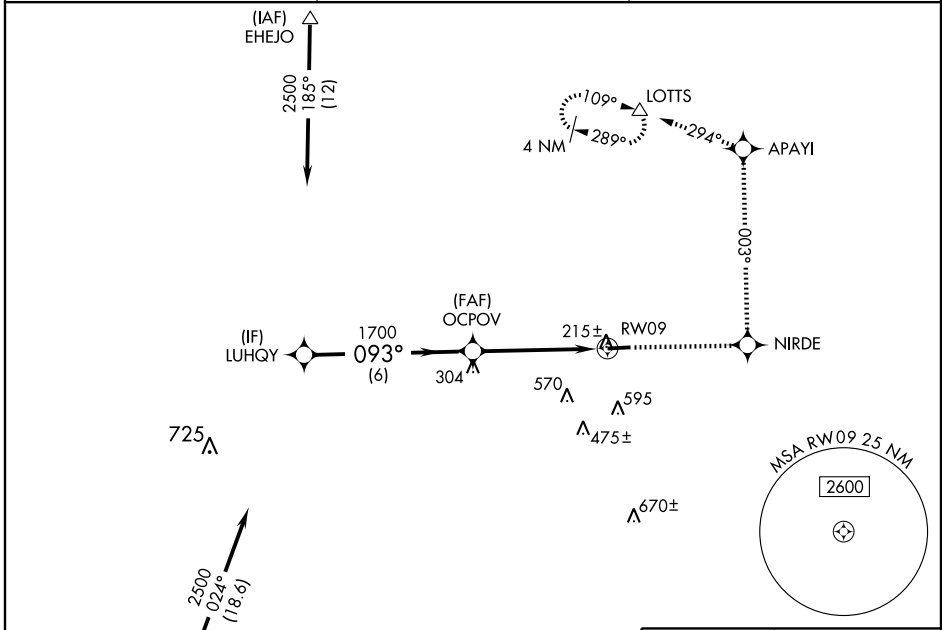
RNAV (GPS) RWY 9

CLAXTON-EVANS COUNTY (CWV)

▼ Baro-VNAV NA when using Savannah altimeter setting. For uncompensated Baro-VNAV systems, LNAV/VNAV NA below -15°C (5°F) or above 48°C (118°F). DME/DME RNP-0.3 NA. ▲ Visibility reduction by helicopters NA. When local altimeter setting not received, use Savannah altimeter setting and increase all DA 88 feet, all MDA 100 feet and LPV and LNAV/VNAV all Cats and Circling Cat D visibility ½ mile and LNAV Cats C/D visibility ¼ mile.

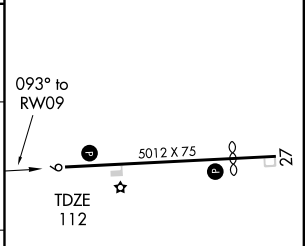
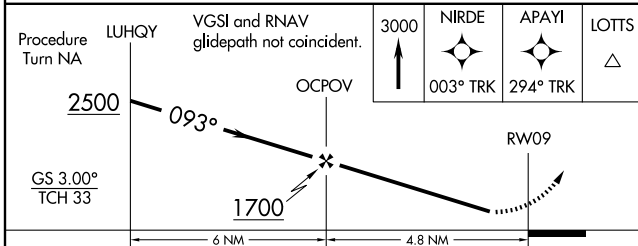
MISSED APPROACH: Climb to 3000 direct NIRDE and via track 003° to APAYI and via track 294° to LOTS and hold.

AWOS-3 120.075	JACKSONVILLE CENTER 120.85 322.5	UNICOM 122.8 (CTAF)
---------------------------------	---	--------------------------------------



Procedure NA for arrivals at REIDS via V157 southwest bound, and V179 southeast bound.

ELEV 112	D
----------	----------



CATEGORY	A	B	C	D
LPV DA		472-1¼	360 (400-1¼)	
LNAV/VNAV DA		824-2½	712 (800-2½)	
LNAV MDA	560-1	448 (500-1)	560-1¼ 448 (500-1¼)	560-1½ 448 (500-1½)
CIRCLING	600-1	488 (500-1)	600-1½ 488 (500-1½)	840-2¼ 728 (800-2¼)



SE-4, 22 OCT 2009 to 19 NOV 2009

SE-4, 22 OCT 2009 to 19 NOV 2009