

CLAXTON, GEORGIA

AL-9199 (FAA)

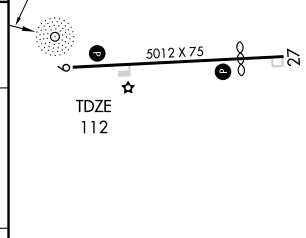
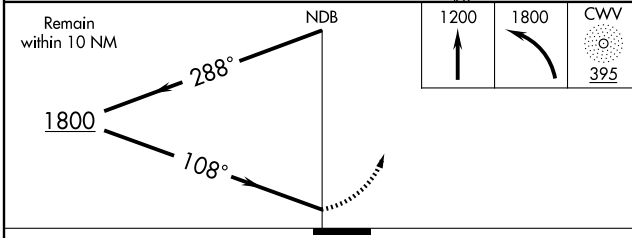
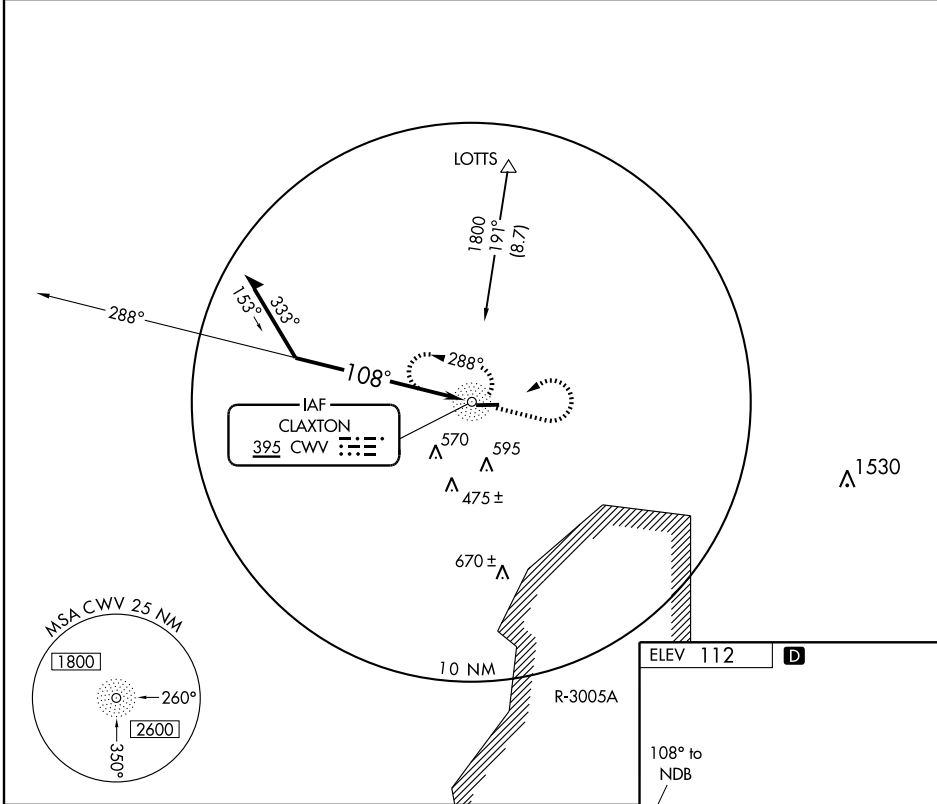
NDB RWY 9
CLAXTON-EVANS COUNTY (CWV)

NDB CWV	APP CRS	Rwy Idg	5012
395	108°	TDZE	112
		Apt Elev	112

▽ If local altimeter setting not received, use Savannah Intl altimeter setting and increase all MDAs 100 feet.
▲ NA

MISSED APPROACH: Climb to 1200 then climbing left turn to 1800 direct CWV NDB and hold.

AWOS-3 120.075	JACKSONVILLE CENTER 120.85 322.5	UNICOM 122.8 (CTAF) 0
--------------------------	--	--



CATEGORY	A	B	C	D
S-9	720-1	608 (700-1)	720-1¾ 608 (700-1¾)	720-2 608 (700-2)
CIRCLING	720-1	608 (700-1)	720-1¾ 608 (700-1¾)	840-2¼ 728 (800-2¼)

MIRL Rwy 9-27 **0**

SE-4, 22 OCT 2009 to 19 NOV 2009

SE-4, 22 OCT 2009 to 19 NOV 2009

CLAXTON, GEORGIA
Orig 09295

32°12'N-81°52'W

CLAXTON-EVANS COUNTY (CWV)
NDB RWY 9