

RNAV (GPS)-A

ARCO-BUTTE COUNTY (AOC)

APP CRS 323°	Rwy Idg TDZE Apt Elev	N/A N/A 5332
------------------------	-----------------------------	-----------------------------------------

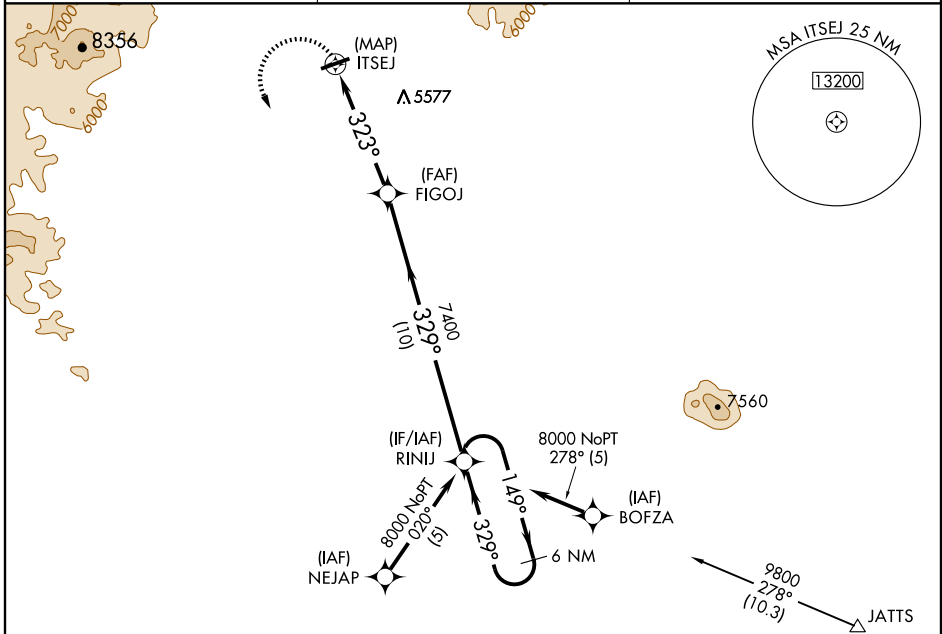
NA GPS or RNP-0.3 required.
DME/DME RNP-0.3 NA.
If local altimeter setting not received, use Pocatello Rgnl altimeter setting and increase all MDAs 600 feet.

MISSED APPROACH: Climbing left turn to 8000 direct RINIJ and hold.

AWOS-3
135.425

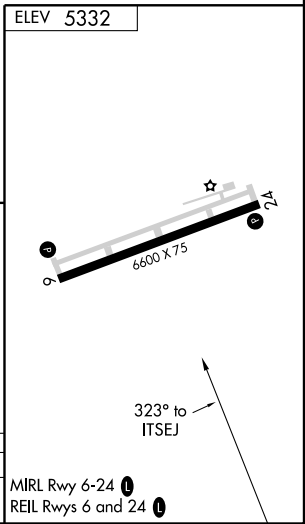
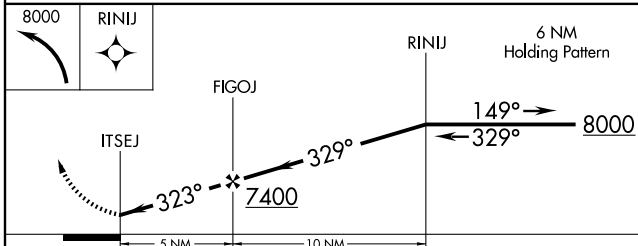
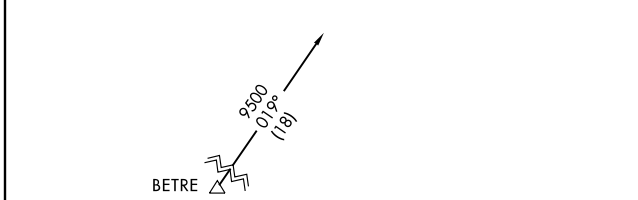
SALT LAKE CENTER
128.35 239.25

UNICOM
122.8 (CTAF)



NW-1, 22 OCT 2009 to 19 NOV 2009

NW-1, 22 OCT 2009 to 19 NOV 2009



CATEGORY	A	B	C	D
CIRCLING	5920-1	588 (600-1)	5920-1½ 588 (600-1½)	5920-2 588 (600-2)

MIRL Rwy 6-24
REIL Rws 6 and 24