

RNAV (GPS) RWY 36

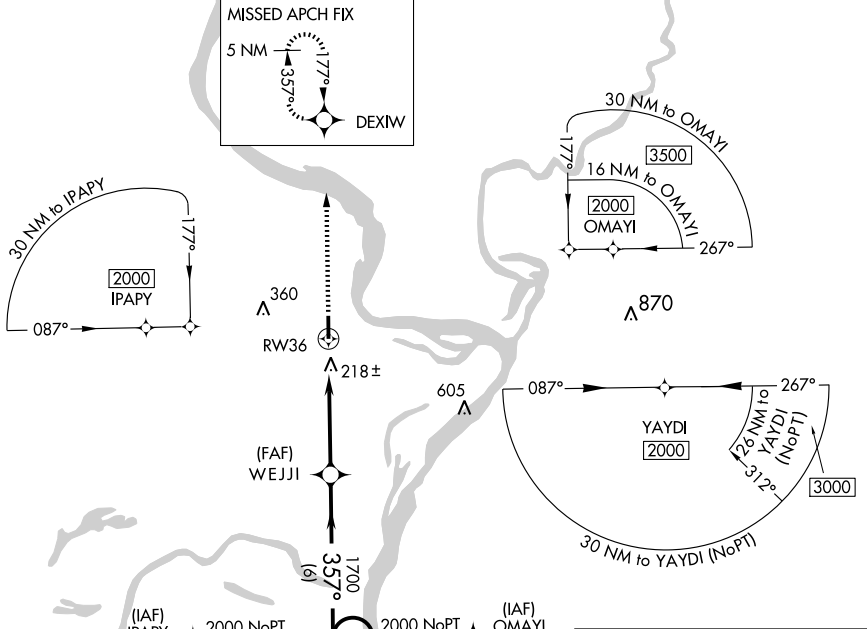
TALLULAH/ VICKSBURG TALLULAH RGNL (TVR)

WAAS Chan 99700 W36A	APP CRS 357°	Rwy ldg 5000 TDZE 86 Apt Elev 86
--	------------------------	---

⚠ DME/DME RNP-0.3 NA. For uncompensated BARO-VNAV systems, LNAV/VNAV NA below -15°C (5°F) or above 48°C (119°F). If local altimeter setting not received, use Hardy-Anders Field Natchez-Adams County altimeter setting and increase all DAs/MDAs 140 feet. BARO-VNAV and VDP NA with Hardy-Anders Field Natchez-Adams County altimeter setting.

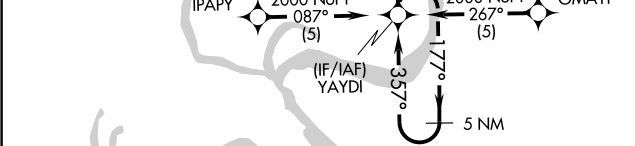
MISSED APPROACH: Climb to 2000 direct DEXIW and hold.

ASOS-3 118.525	MEMPHIS CENTER 132.5 259.1	UNICOM 123.0 (CTAF) 0
--------------------------	--------------------------------------	---------------------------------

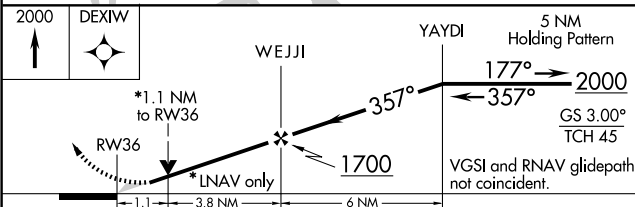
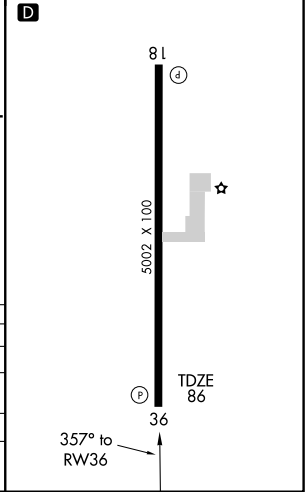


SC-4, 22 OCT 2009 to 19 NOV 2009

SC-4, 22 OCT 2009 to 19 NOV 2009



ELEV 86	MIRL Rwy 18-36 0
---------	------------------



CATEGORY	A	B	C	D
LPV DA		371-1	285 (300-1)	
LNAV/ VNAV DA		498-1½	412 (500-1½)	
LNAV MDA	500-1	414 (500-1)	500-1¼	414 (500-1¼)
CIRCLING	520-1½ 434 (500-1½)	540-1½ 454 (500-1½)	640-2 554 (600-2)	

RNAV (GPS) RWY 36