

# RNAV (GPS) RWY 18

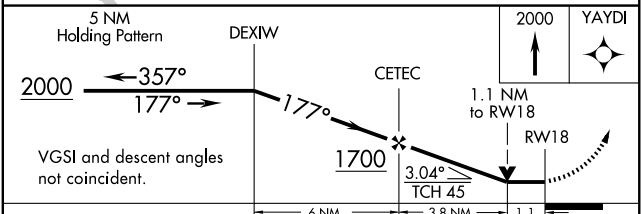
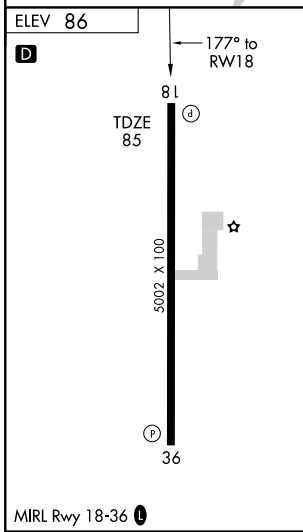
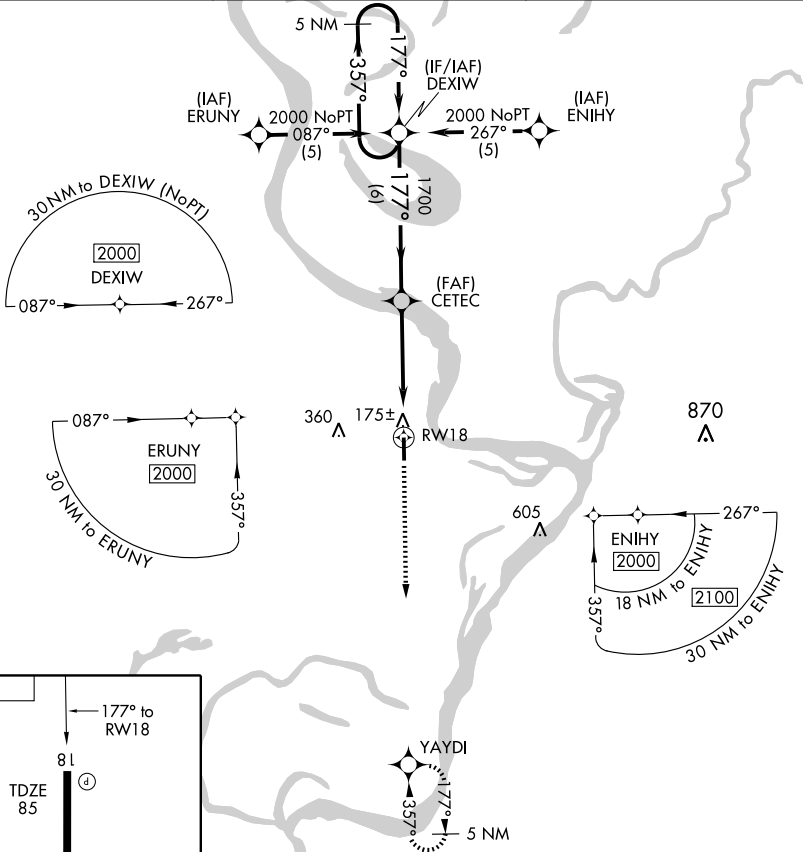
TALLULAH/ VICKSBURG TALLULAH RGNL (TVR)

APP CRS	Rwy ldg	<b>5000</b>
<b>177°</b>	TDZE	<b>85</b>
	Apt Elev	<b>86</b>

**⚠** DME/DME RNP-0.3 NA. If local altimeter setting not received, use Hardy-Anders Field Natchez-Adams County altimeter setting and increase all MDA's 140 feet.  
**⚠** VDP NA with Hardy-Anders Field Natchez-Adams County altimeter setting.

**MISSED APPROACH:** Climb to 2000 direct YAYDI and hold.

ASOS-3 <b>118.525</b>	MEMPHIS CENTER <b>132.5 259.1</b>	UNICOM <b>123.0 (CTAF) 0</b>
--------------------------	--------------------------------------	---------------------------------



CATEGORY	A	B	C	D
LNAV MDA	500-1	415 (500-1)	500-1¼	415 (500-1¼)
CIRCLING	520-1 434 (500-1)	540-1 454 (500-1)	540-1½ 454 (500-1½)	640-2 554 (600-2)

SC-4, 22 OCT 2009 to 19 NOV 2009

SC-4, 22 OCT 2009 to 19 NOV 2009