

RNAV (GPS) RWY 27

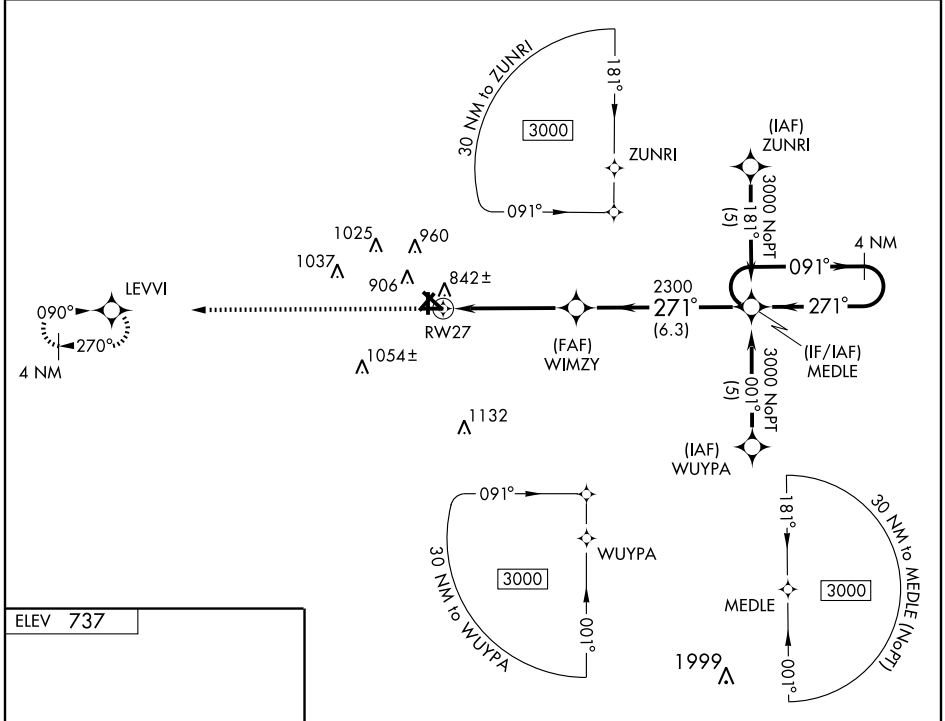
RANTOUL NATL AVN CNTR-FRANK ELLIOTT FIELD (TIP)

APP CRS 271°	Rwy Idg 5000
	TDZE 733
	Apt Elev 737

▼ For uncompensated Baro-VNAV systems, LNAV/VNAV NA below -16°C (4°F) or above 47°C (116°F). When local altimeter setting not received, use Champaign Urbana altimeter setting and increase DA 41 feet and all MDAs 60 feet, increase visibilities LNAV/VNAV ¼ mile all Cats., LNAV Cat. D ¼ mile, and Circling Cat. C ¼ mile. Baro-VNAV and VDP NA when using Champaign Urbana altimeter setting. DME/DME RNP-0.3 NA.

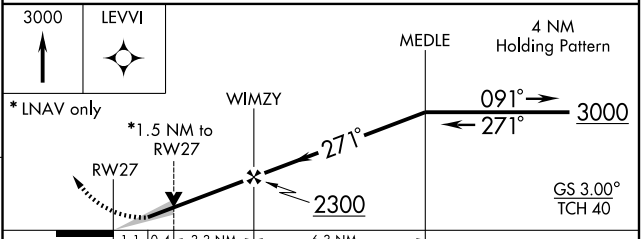
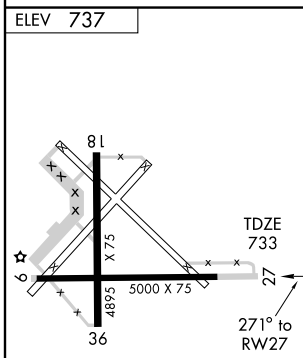
⚠ MISSED APPROACH:
Climb to 3000 direct LEVVI and hold.

AWOS-3 119.025	CHAMPAIGN APP CON * 121.35 285.65	UNICOM 123.0 (CTAF) 0
--------------------------	---	---------------------------------



EC-3, 22 OCT 2009 to 19 NOV 2009

EC-3, 22 OCT 2009 to 19 NOV 2009



CATEGORY	A	B	C	D
LNAV/VNAV DA	1112-1¼ 379 (400-1¼)			
LNAV MDA	1240-1	507 (600-1)	1240-1½	507 (600-1½)
CIRCLING	1240-1 503 (600-1)	1260-1 523 (600-1)	1320-1½ 583 (600-1½)	1320-2 583 (600-2)