

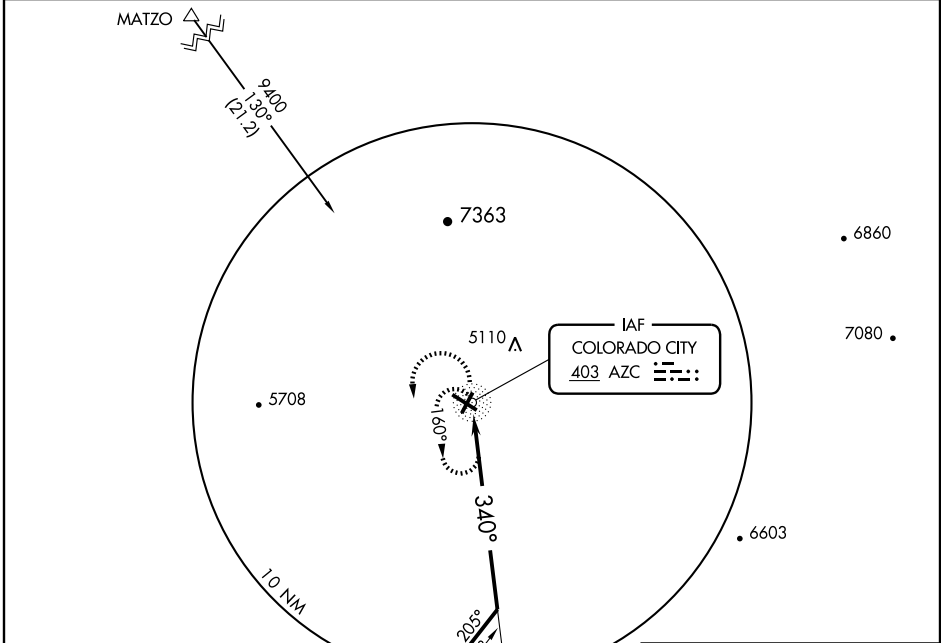
NDB or GPS-A
COLORADO CITY MUNI (AZC)

NDB AZC 403	APP CRS 340°	Rwy Idg TDZE Apt Elev N/A N/A 4871
-----------------------	------------------------	--

⚠ NA When local altimeter setting not received, procedure not authorized.

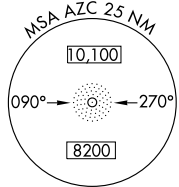
MISSED APPROACH: Climbing left turn to 7400 via heading 160°, then climbing left turn to 8400 direct AZC NDB and hold.

AWOS-3 118.375	LOS ANGELES CENTER 124.2 343.6	UNICOM 122.7 (CTAF) ①
--------------------------	--	--

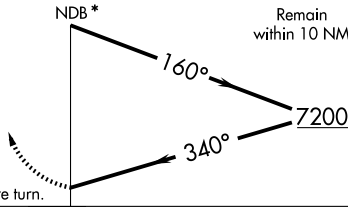


SW-4, 22 OCT 2009 to 19 NOV 2009

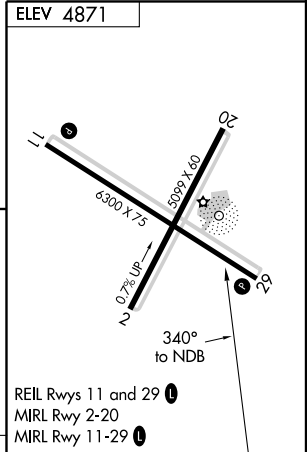
SW-4, 22 OCT 2009 to 19 NOV 2009



7400 HDG 160°	8400	AZC ① 403
------------------	------	-----------------



*Maintain 8600 feet or above until established outbound for procedure turn.



CATEGORY	A	B	C	D	Knots	60	90	120	150	180
CIRCLING	5700-1 829 (900-1)	5700-1¼ 829 (900-1¼)	5700-2½ 829 (900-2½)	5700-2¾ 829 (900-2¾)	Min:Sec					