

VORTAC UIN 113.6 Chan 83	APP CRS 308°	Rwy Idg TDZE Apt Elev N/A N/A 674
--	------------------------	---

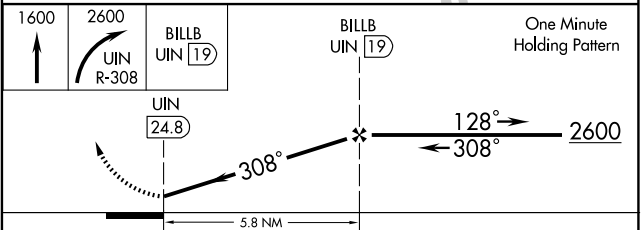
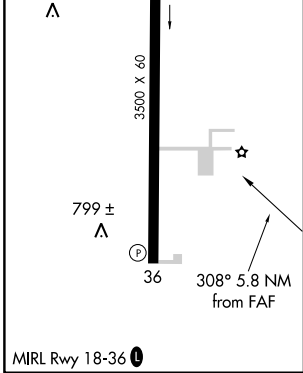
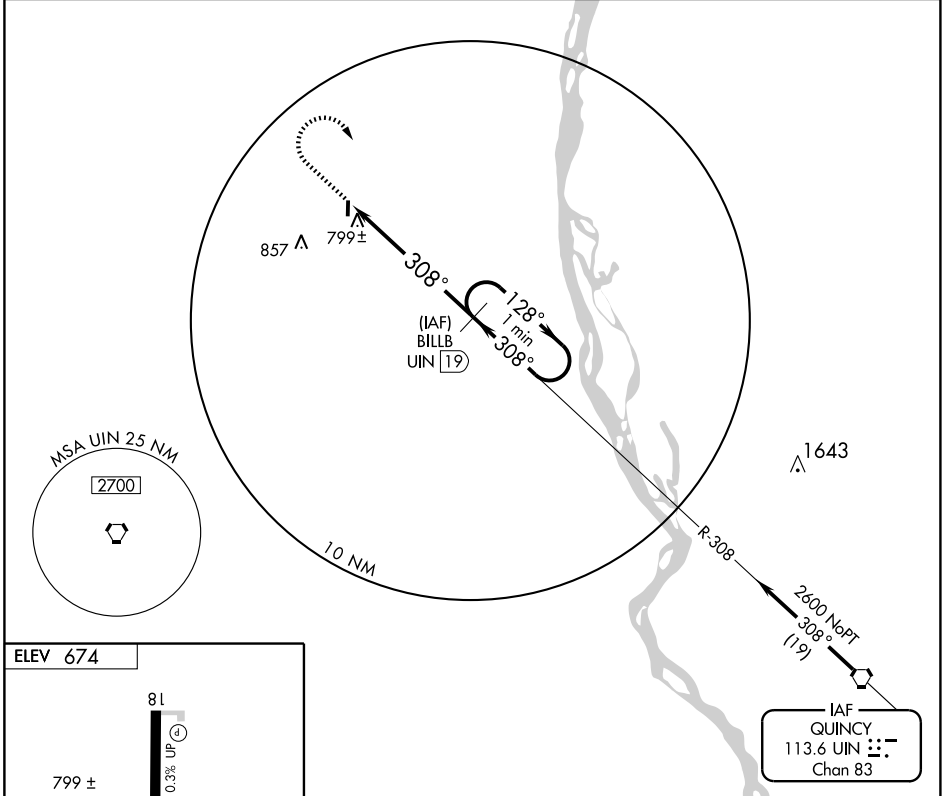
VOR/DME-A
MONTICELLO/ LEWIS COUNTY RGNL (6M6)

NA Use Quincy altimeter setting; when not received use Kirksville altimeter setting

MISSED APPROACH: Climb to 1600 then right turn to 2600 via UIN R-308 to BILLB/19 DME and hold.

KANSAS CITY CENTER **135.525 319.9**

UNICOM **122.7 (CTAF)**



CATEGORY	A	B	C	D
CIRCLING	1180-1 506 (600-1)	1180-1¼ 506 (600-1¼)	NA	
KIRKSVILLE ALTIMETER SETTING MINIMUMS				
CIRCLING	1240-1 566 (600-1)	1240-1¼ 566 (600-1¼)	NA	

NC-3, 22 OCT 2009 to 19 NOV 2009

NC-3, 22 OCT 2009 to 19 NOV 2009