

**RNAV (GPS) RWY 36**  
MONTICELLO/LEWIS COUNTY RGNL (6M6)

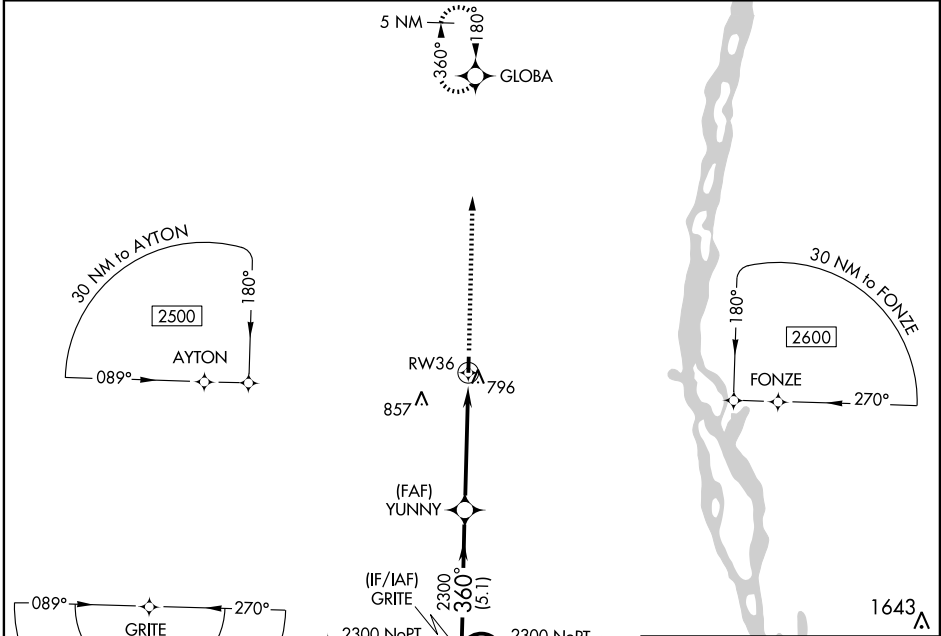
WAAS CH <b>97601</b> <b>W36A</b>	APP CRS <b>360°</b>	Rwy Idg <b>3500</b> TDZE <b>675</b> Apt Elev <b>675</b>
--	------------------------	---

**NA** DME/DME RNP-0.3 NA. Baro-VNAV NA. Use Quincy altimeter setting; if not received, use Kirksville altimeter setting and increase all DAs/MDAs 80 feet.

MISSED APPROACH: Climb to 2400 direct GLOBA and hold.

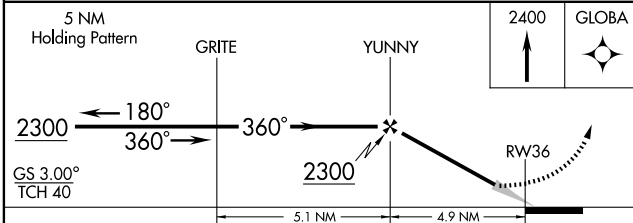
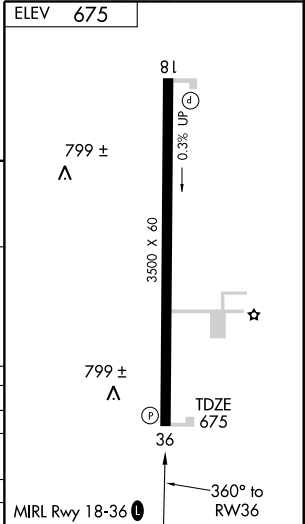
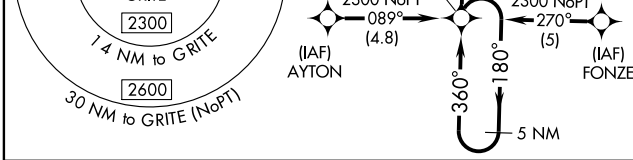
KANSAS CITY CENTER  
**135.525 319.9**

UNICOM  
**122.7 (CTAF)**



NC-3, 22 OCT 2009 to 19 NOV 2009

NC-3, 22 OCT 2009 to 19 NOV 2009



CATEGORY	A	B	C	D
LPV DA	996-1¼	321 (400-1¼)		NA
LNAV/VNAV DA	1137-1¾	462 (500-1¾)		NA
LNAV MDA	1120-1	445 (500-1)		NA
CIRCLING	1180-1	505 (600-1)		NA