

WAAS CH 50401 W18A	APP CRS 180°	Rwy Idg 3500 TDZE 675 Apt Elev 675
----------------------------------------	------------------------	---------------------------------------------------------------

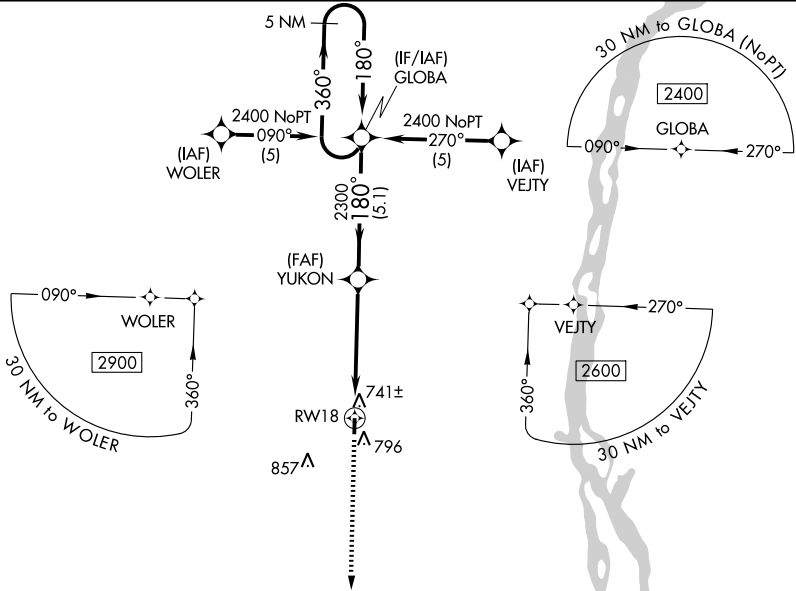
RNAV (GPS) RWY 18
MONTICELLO/LEWIS COUNTY RGNL (6M6)

NA DME/DME RNP-0.3 NA. Baro-VNAV NA. Use Quincy altimeter setting; if not received, use Kirksville altimeter setting and increase all DAs/MDAs 80 feet.

MISSED APPROACH: Climb to 2300 direct GRITE and hold.

KANSAS CITY CENTER **135.525 319.9**

UNICOM **122.7 (CTAF)**



NC-3, 22 OCT 2009 to 19 NOV 2009

NC-3, 22 OCT 2009 to 19 NOV 2009

