

GEORGETOWN, KENTUCKY

AL-9191 (FAA)

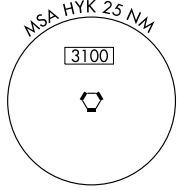
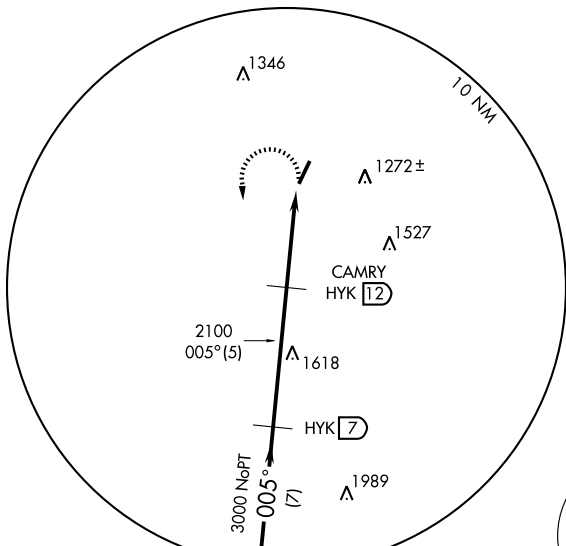
VORTAC HYK <b>112.6</b> Chan 73	APP CRS <b>005°</b>	Rwy ldg TDZE Apt Elev	<b>5498</b> <b>943</b> <b>946</b>
---------------------------------------	------------------------	-----------------------------	---

# VOR/DME RWY 3

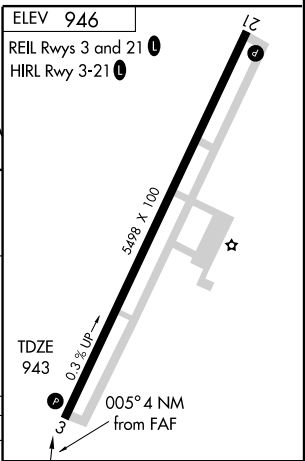
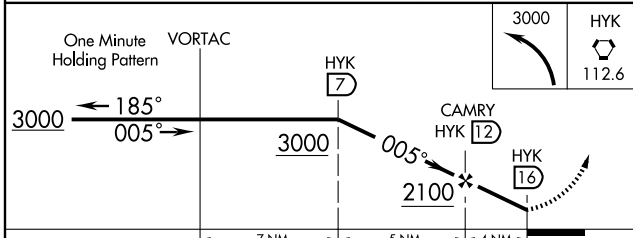
GEORGETOWN SCOTT COUNTY-MARSHALL FIELD (27K)

<b>▲ NA</b>	MISSED APPROACH: Climbing left turn to 3000 direct HYK VORTAC and hold.		
-------------	---	--	--

AWOS-3 <b>119.975</b>	LEXINGTON APP CON <b>120.15 259.3 (040°-220°) 120.75 298.9 (221°-039°)</b>	CLNC DEL <b>127.425</b>	UNICOM <b>123.0 (CTAF) 0</b>
--------------------------	---	----------------------------	---------------------------------



No procedure turn for arrivals on HYK VORTAC airway radials 095° clockwise 275°



CATEGORY	A	B	C	D
S-3	1520-1 577 (600-1)		1520-1½ 577 (600-1½)	1520-1¾ 577 (600-1¾)
CIRCLING	1520-1 574 (600-1)		1520-1½ 574 (600-1½)	1660-2¼ 714 (800-2¼)

Knots	60	90	120	150	180
Min:Sec					

GEORGETOWN, KENTUCKY  
Orig-A 08325

GEORGETOWN SCOTT COUNTY-MARSHALL FIELD (27K)  
38° 14' N - 84° 26' W

# VOR/DME RWY 3

SE-1, 22 OCT 2009 to 19 NOV 2009

SE-1, 22 OCT 2009 to 19 NOV 2009