

WAAS CH 63115 W12A	APP CRS 121°	Rwy Idg 5702 TDZE 791 Apt Elev 798
--	------------------------	---

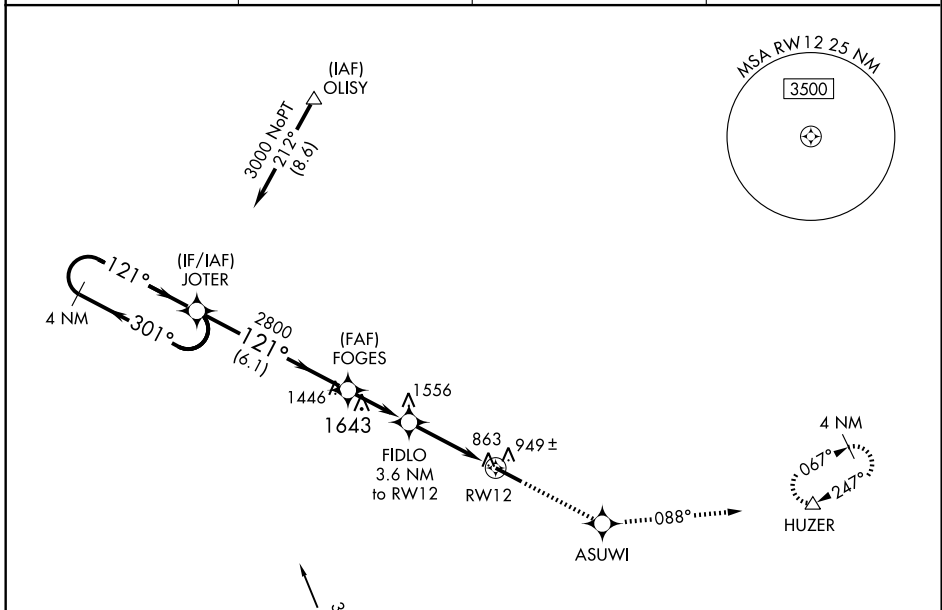
RNAV (GPS) RWY 12

THOMASTON-UPSON COUNTY (OPN)

⚠ DME/DME RNP-0.3 NA. Visibility reduction by helicopters NA. When local altimeter setting not received, use Peachtree City-Falcon Field altimeter setting and increase all DA 68 feet and all MDA 80 feet; increase LPV visibility ¼ mile all Cats, LNAV Cat D visibility ¼ mile.

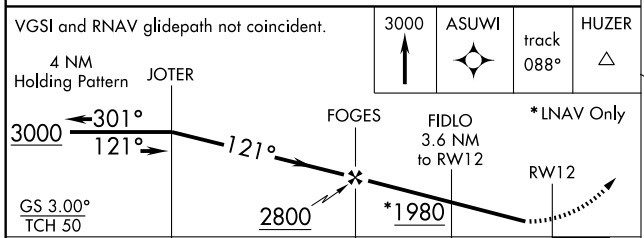
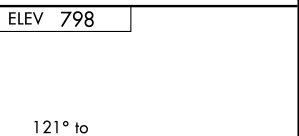
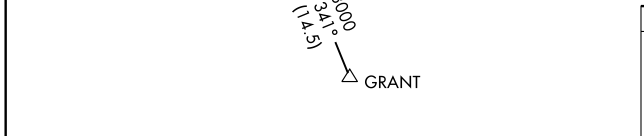
MISSED APPROACH: Climb to 3000 direct ASUWI and via track 088° to HUZER and hold.

AWOS-3 133.975	ATLANTA APP CON * 124.2 279.6	GCO 121.725	UNICOM 122.8 (CTAF) 0
--------------------------	---	-----------------------	---------------------------------



SE-4, 22 OCT 2009 to 19 NOV 2009

SE-4, 22 OCT 2009 to 19 NOV 2009



CATEGORY	A	B	C	D
LPV DA	1063-1		272 (300-1)	
LNAV MDA	1200-1 409 (500-1)		1200-1¼ 409 (500-1¼)	
CIRCLING	1300-1 502 (600-1)		1300-1½ 502 (600-1½) 1360-2 562 (600-2)	

