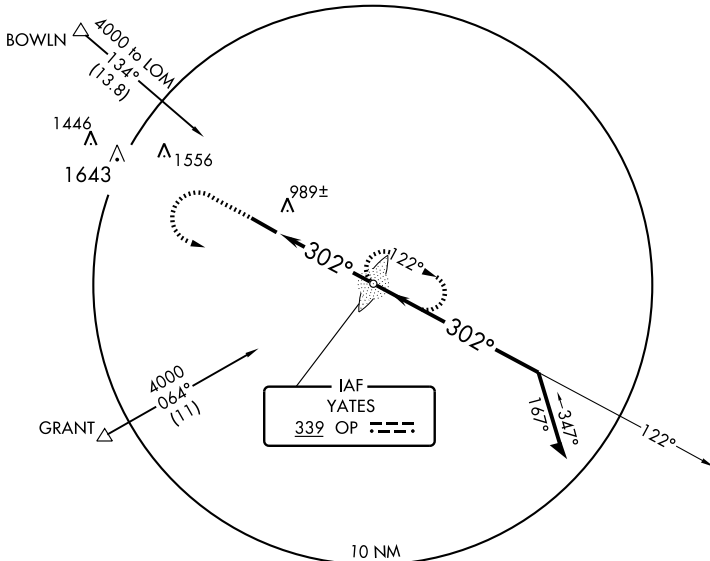


NDB OP 339	APP CRS 302°	Rwy Idg TDZE Apt Elev	5651 796 798
----------------------	------------------------	-----------------------------	---

NDB RWY 30
THOMASTON-UPSON COUNTY (OPN)

<p>When local altimeter setting not received, use Peachtree City-Falcon Field altimeter setting and increase all MDA 80 feet; increase S-30 Cats C, D visibility ¼ mile.</p>	<p>MALS R</p>	<p>MISSED APPROACH: Climb to 1500 then climbing left turn to 3000 direct YATES LOM and hold.</p>
--	---------------	--

AWOS-3 133.975	ATLANTA APP CON* 124.2 279.6	GCO 121.725	UNICOM 122.8 (CTAF)
--------------------------	--	-----------------------	-------------------------------



SE-4, 22 OCT 2009 to 19 NOV 2009

SE-4, 22 OCT 2009 to 19 NOV 2009

ELEV 798

MIRL Rwy 12-30

FAF to MAP 4 NM					
Knots	60	90	120	150	180
Min:Sec	4:00	2:40	2:00	1:36	1:20

1500	3000	OP		339
------	------	----	--	-----

LOM 122° 2400

302° 2200

3.20° TCH 40

4 NM

Remain within 10 NM

VGSI and descent angles not coincident.

CATEGORY	A	B	C	D
S-30	1300-¾ 504 (600-¾)		1300-1 504 (600-1)	1300-1½ 504 (600-1½)
CIRCLING	1300-1 502 (600-1)		1300-1½ 502 (600-1½)	1360-2 562 (600-2)