

RNAV (GPS) RWY 18

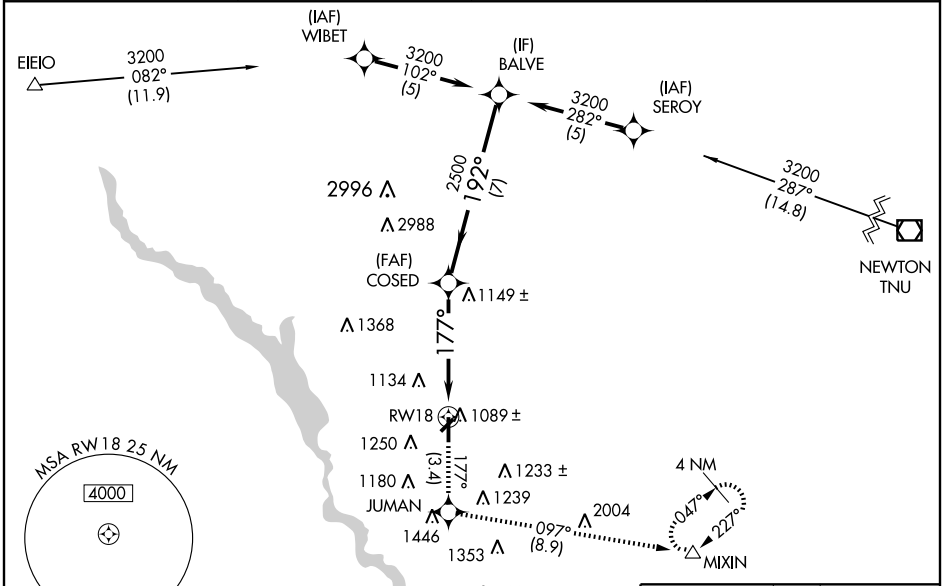
ANKENY RGNL (IKV)

APP CRS 177°	Rwy Idg 5500
	TDZE 903
	Apt Elev 910

⚠ DME/DME RNP-0.3 NA. Circling Rwy 22 NA at night.
⚠ When local altimeter setting not received, use Des Moines Intl altimeter setting and increase all DA 31 feet and all MDA 40 feet, increase LNAV/VNAV all Cts visibility ¼ mile.
 For uncompensated Baro-VNAV systems, LNAV/VNAV NA below -16°C (4°F) or above 54°C (130°F).
 Baro-VNAV and VDP NA when using Des Moines Intl altimeter setting.

MISSED APPROACH: Climb to 4000 via 177° course to JUMAN WP then left turn via 097° course to MIXIN WP and hold.

AWOS-3 119.175	DES MOINES APP CON 123.9 307.15	CLNC DEL 126.65	UNICOM 122.9 (CTAF) 0
--------------------------	---	---------------------------	---------------------------------

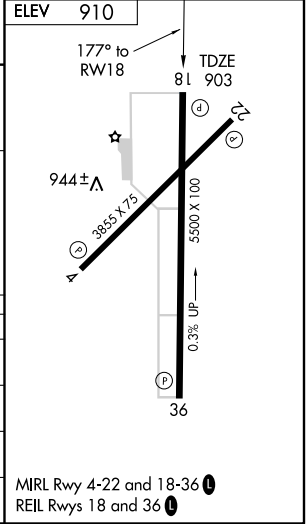


NC-3, 22 OCT 2009 to 19 NOV 2009

NC-3, 22 OCT 2009 to 19 NOV 2009

VGSI and RNAV glidepath not coincident

Procedure Turn NA	BALVE	COSED	JUMAN	MIXIN
	3200	2500	177°	097°
GS 3.00° TCH 45	192°	177°	*1.5 NM to RWY 18	*LNAV only
	7 NM	3.3 NM	1.5 NM	
CATEGORY	A	B	C	D
GLS PA DA	NA			
LNAV/VNAV DA	1478-2		575 (600-2)	
LNAV MDA	1340-1	437 (500-1)	1340-1¼ 437 (500-1¼)	NA
CIRCLING	1560-1½	650 (700-1½)	1560-1¾ 650 (700-1¾)	NA



MIRL Rwy 4-22 and 18-36 0
REIL Rwy 18 and 36 0