

CONCORD, NORTH CAROLINA

AL-9155 (FAA)

RNAV (GPS) RWY 20

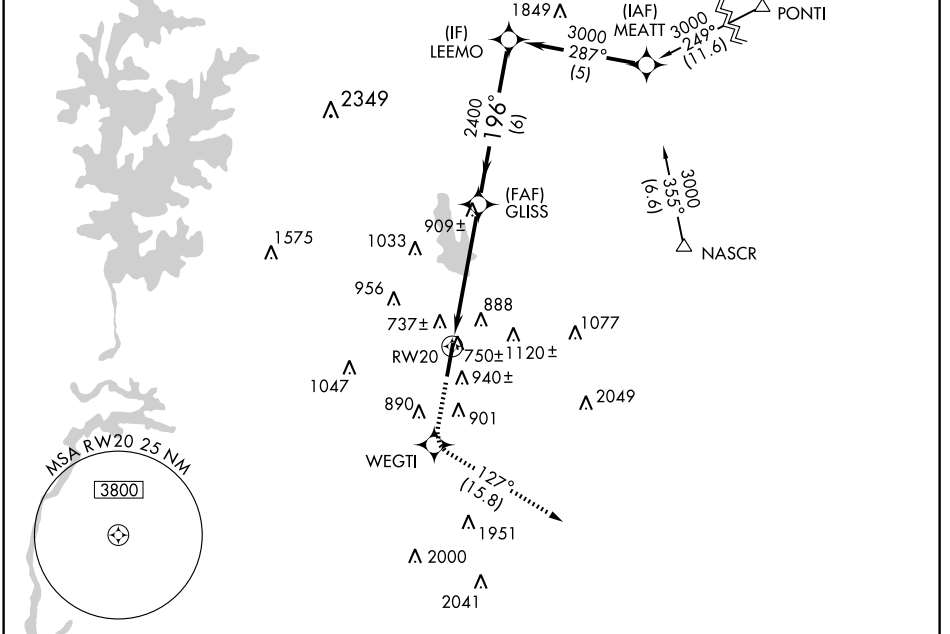
CONCORD RGNL (JQF)

| | | | |
|--|------------------------|-----------------------------|---|
| WAAS CH 56499 W20A | APP CRS 196° | Rwy Idg TDZE Apt Elev | 6350 705 705 |
|--|------------------------|-----------------------------|---|

⚠ DME/DME RNP-0.3 NA. Baro-VNAV NA below -16°C (4°F). For inoperative MALS R increase LPV visibility to 1. If local altimeter setting not received, use Charlotte altimeter setting and increase all DAs/MDAs 60 feet. VDP and Baro-VNAV NA when using Charlotte altimeter setting.

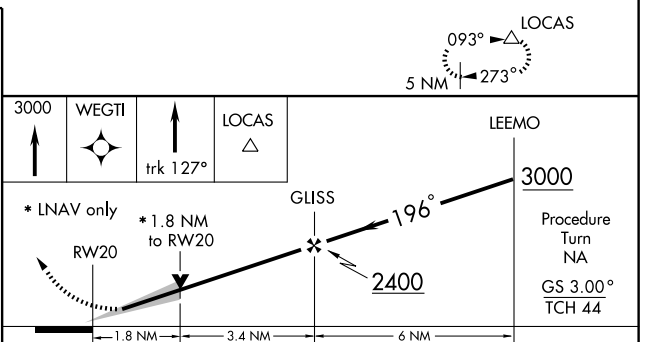
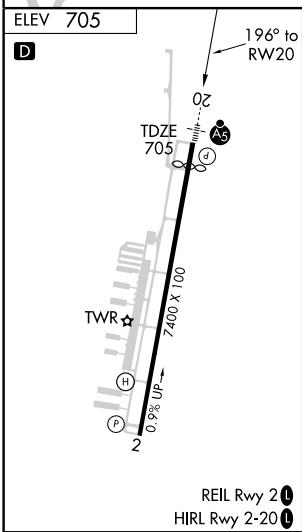
MALS MISSED APPROACH: Climb to 3000 direct WEGTI and via 127° track to LOCAS and hold.

| | | | | | | |
|--------------------------|--|--|--------------------------|---------------------------|--|-------------------------|
| AWOS-3 133.675 | CHARLOTTE APP CON 128.32 307.8 | CONCORD TOWER ★ 134.65 (CTAF) 0 | GND CON 121.85 | CLNC DEL 118.55 | CHARLOTTE CLNC DEL 127.25 (when tower closed) | UNICOM 122.95 |
|--------------------------|--|--|--------------------------|---------------------------|--|-------------------------|



SE-2, 22 OCT 2009 to 19 NOV 2009

SE-2, 22 OCT 2009 to 19 NOV 2009



| CATEGORY | A | B | C | D |
|--------------|----------|---------------|-----------------------|-------------------------------|
| LPV DA | | 955-1/2 | 250 (300-1/2) | |
| LNAV/VNAV DA | | 1222-1 1/4 | 517 (600-1 1/4) | |
| LNAV MDA | 1300-1/2 | 595 (600-1/2) | 1300-1 595 (600-1) | 1300-1 1/4 595 (600-1 1/4) |
| CIRCLING | | 1300-1 3/4 | 595 (600-1 3/4) | 1480-2 1/2 775 (800-2 1/2) |

CONCORD, NORTH CAROLINA
Orig 09239

35°23'N-80°43'W

RNAV (GPS) RWY 20