

RNAV (GPS) RWY 2

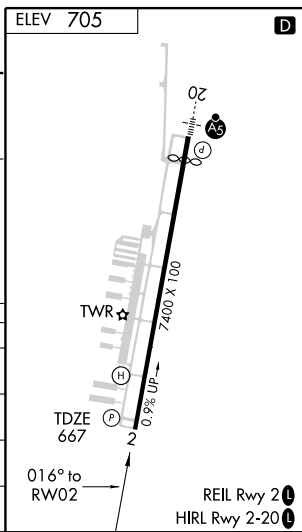
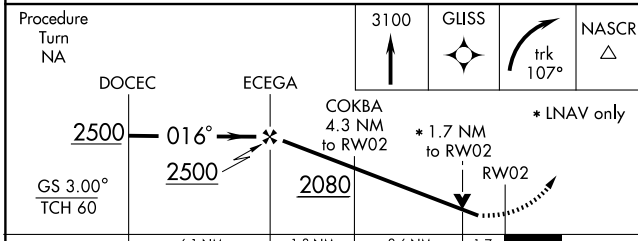
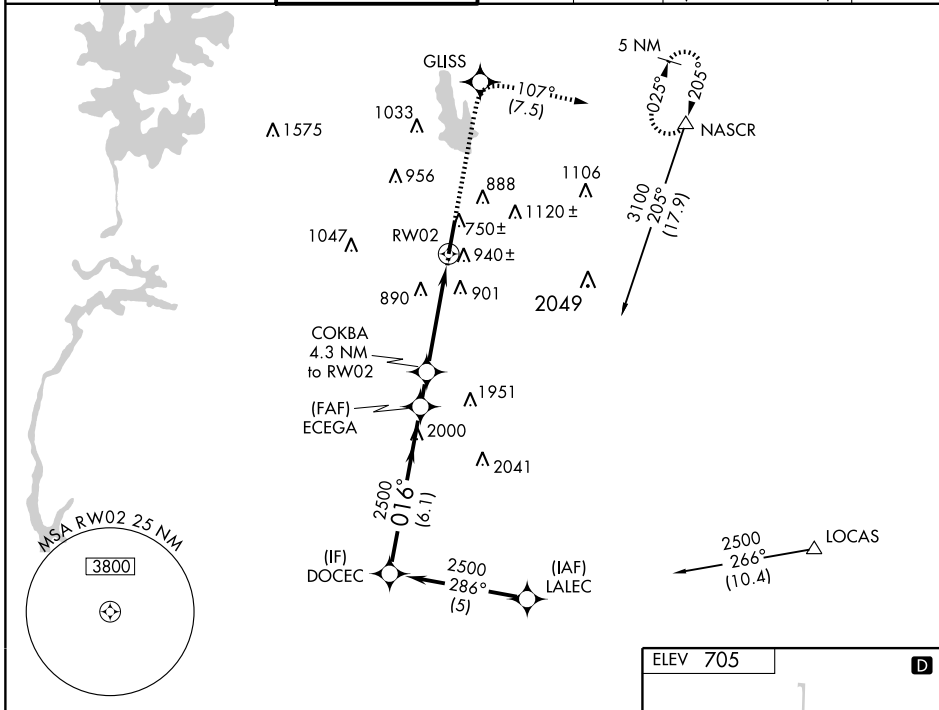
CONCORD RGNL (JQF)

WAAS CH 56228 W02A	APP CRS 016°	Rwy Idg TDZE Apt Elev	7400 667 705
--	------------------------	-----------------------------	---

▼ DME/DME RNP-0.3 NA. Baro-VNAV NA below -16°C (4°F). If local altimeter setting not received, use Charlotte altimeter setting and increase all DAs/MDAs 60 feet. VDP and Baro-VNAV NA when using Charlotte altimeter setting.

MISSED APPROACH: Climb to 3100 direct GLISS and right turn via 107° track to NASCR and hold.

AWOS-3 133.675	CHARLOTTE APP CON 128.32 307.8	CONCORD TOWER ★ 134.65 (CTAF) 0	GND CON 121.85	CLNC DEL 118.55	CHARLOTTE CLNC DEL 127.25 (when tower closed)	UNICOM 122.95
--------------------------	--	--	--------------------------	---------------------------	--	-------------------------



CATEGORY	A	B	C	D
LPV DA	983-1¼		316 (300-1¼)	
LNAV/VNAV DA	1220-2		553 (600-2)	
LNAV MDA	1240-1	573 (600-1)	1240-1½ 573 (600-1½)	1240-1¾ 573 (600-1¾)
CIRCLING	1300-2		595 (600-2)	
			1480-2½ 775 (800-2½)	

SE-2, 22 OCT 2009 to 19 NOV 2009

SE-2, 22 OCT 2009 to 19 NOV 2009