

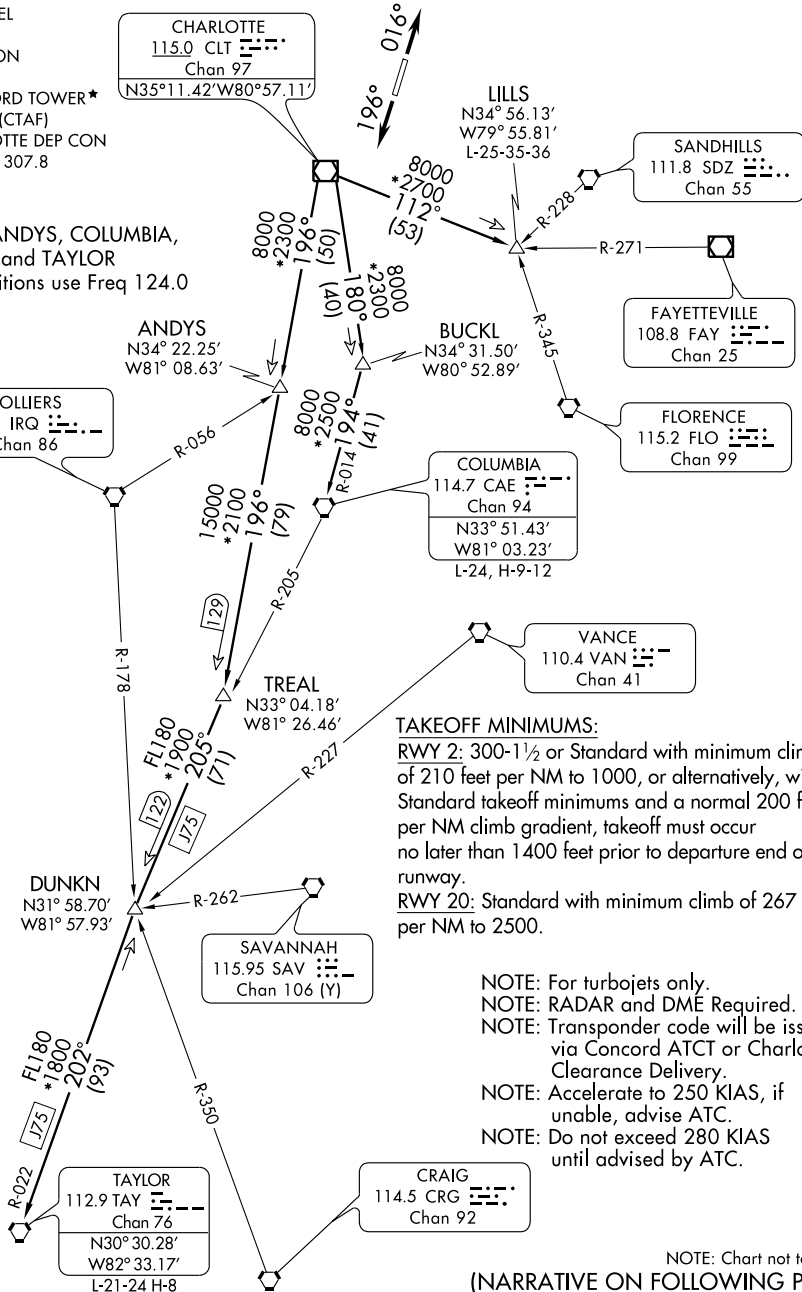
PANTHER EIGHT DEPARTURE

SL-9155 (FAA)

CONCORD RGNL (JQF)
CONCORD, NORTH CAROLINA

AWOS-3
133.675
CLNC DEL
118.55
GND CON
121.85
CONCORD TOWER*
134.65 (CTAF)
CHARLOTTE DEP CON
128.32 307.8

For ANDYS, COLUMBIA,
LILLS and TAYLOR
transitions use Freq 124.0



TAKEOFF MINIMUMS:

RWY 2: 300-1½ or Standard with minimum climb of 210 feet per NM to 1000, or alternatively, with Standard takeoff minimums and a normal 200 feet per NM climb gradient, takeoff must occur no later than 1400 feet prior to departure end of runway.

RWY 20: Standard with minimum climb of 267 feet per NM to 2500.

- NOTE: For turbojets only.
- NOTE: RADAR and DME Required.
- NOTE: Transponder code will be issued via Concord ATCT or Charlotte Clearance Delivery.
- NOTE: Accelerate to 250 KIAS, if unable, advise ATC.
- NOTE: Do not exceed 280 KIAS until advised by ATC.

NOTE: Chart not to scale.

(NARRATIVE ON FOLLOWING PAGE)

PANTHER EIGHT DEPARTURE

CONCORD, NORTH CAROLINA
CONCORD RGNL (JQF)

SE-2, 22 OCT 2009 to 19 NOV 2009

SE-2, 22 OCT 2009 to 19 NOV 2009