

ILS or LOC RWY 20

CONCORD RGNL (JQF)

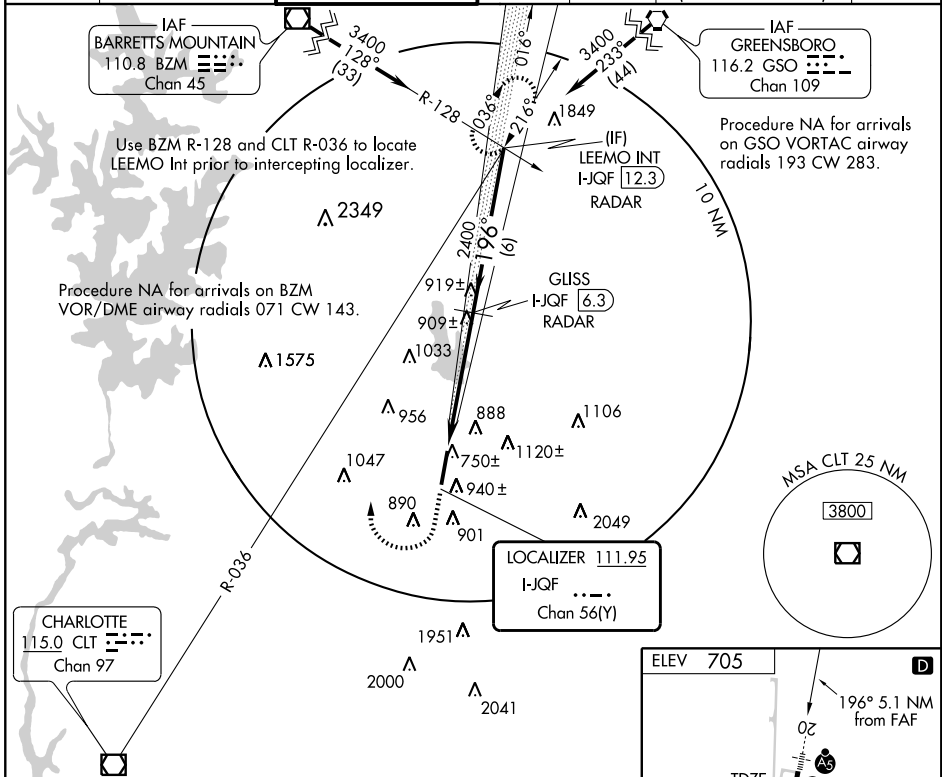
LOC/DME I-JQF 111.95 Chan 56 (Y)	APP CRS 196°	Rwy Idg 6350 TDZE 705 Apt Elev 705
--	------------------------	---

▼ If local altimeter setting not received, use Charlotte altimeter setting and increase all DA/MDAs 60 feet.
▲ VDP NA when using Charlotte altimeter setting. Radar or DME Required.

MALS
AS

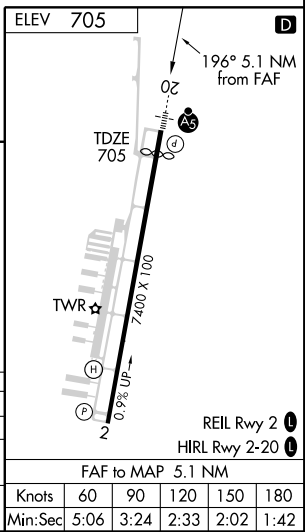
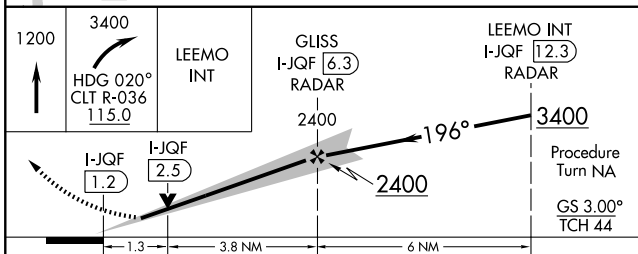
MISSED APPROACH: Climb to 1200 then climbing right turn to 3400 via heading 020° and CLT R-036 to LEEMO Int/I-JQF 12.3 DME and hold.

AWOS-3 133.675	CHARLOTTE APP CON 128.32 307.8	CONCORD TOWER ★ 134.65 (CTAF)	GND CON 121.85	CLNC DEL 118.55	CHARLOTTE CLNC DEL 127.25 (when tower closed)	UNICOM 122.95
--------------------------	--	---	--------------------------	---------------------------	--	-------------------------



SE-2, 22 OCT 2009 to 19 NOV 2009

SE-2, 22 OCT 2009 to 19 NOV 2009



CATEGORY	A	B	C	D
S-ILS 20	905-1/2 200 (200-1/2)			
S-LOC 20	1160-1/2 455 (500-1/2)	1160-3/4 455 (500-3/4)	1160-1 455 (500-1)	
CIRCLING	1300-1 595 (600-1)	1300-1/2 595 (600-1/2)	1480-2 1/2 775 (800-2 1/2)	

FAF to MAP 5.1 NM					
Knots	60	90	120	150	180
Min:Sec	5:06	3:24	2:33	2:02	1:42