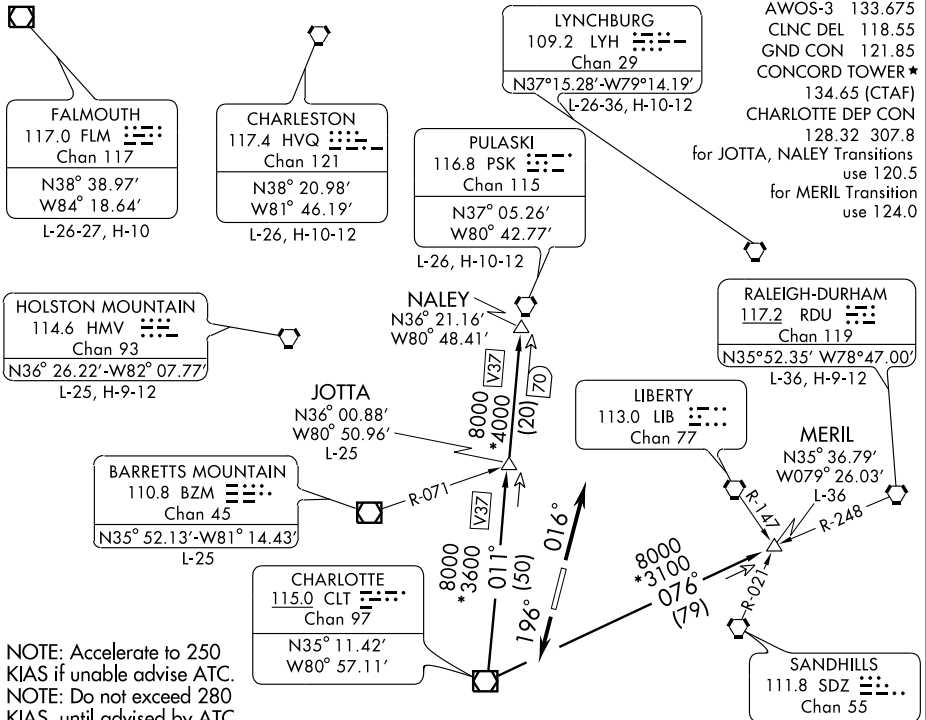


# HORNET FOUR DEPARTURE

SL-9155 (FAA)

CONCORD RGNL (JQF)  
CONCORD, NORTH CAROLINA



AWOS-3 133.675  
 CLNC DEL 118.55  
 GND CON 121.85  
 CONCORD TOWER \*  
 134.65 (CTAF)  
 CHARLOTTE DEP CON  
 128.32 307.8  
 for JOTTA, NALEY Transitions  
 use 120.5  
 for MERIL Transition  
 use 124.0

NOTE: Accelerate to 250 KIAS if unable advise ATC.  
 NOTE: Do not exceed 280 KIAS, until advised by ATC.  
 NOTE: RADAR and DME Required.  
 NOTE: For turbojets only.  
 NOTE: Transponder code will be issued via Concord ATCT or Charlotte Clearance Delivery.

### TAKEOFF MINIMUMS:

**RWY 2:** 300-1½ or Standard with minimum climb of 210 feet per NM to 1000, or alternatively, with Standard takeoff minimums and a normal 200 feet/ NM climb gradient, takeoff must occur no later than 1400 feet prior to departure end of runway.  
**RWY 20:** Standard with minimum climb of 267 feet per NM to 2500.

NOTE: Chart not to scale.



## DEPARTURE ROUTE DESCRIPTION

**TAKEOFF RWY 2:** Climb heading 016°. Thence....

**TAKEOFF RWY 20:** Climb heading 196°. Thence....

....Expect radar vectors to intercept filed/assigned transition or Enroute fix/navaid. Maintain 3000. Expect filed altitude/flight level 10 minutes after departure.

**JOTTA TRANSITION (HOR4.JOTTA):** From over CLT VOR/DME via CLT R-011 to JOTTA INT. Thence as filed.

**MERIL TRANSITION (HOR4.MERIL):** From over CLT VOR/DME via CLT R-076 to MERIL INT. Thence as filed.

**NALEY TRANSITION (HOR4.NALEY):** From over CLT VOR/DME via CLT R-011 to NALEY INT. Thence as filed.

(CONTINUED ON NEXT PAGE)

# HORNET FOUR DEPARTURE

SE-2, 22 OCT 2009 to 19 NOV 2009

SE-2, 22 OCT 2009 to 19 NOV 2009