

LA GRANGE, TEXAS

AL-9154 (FAA)

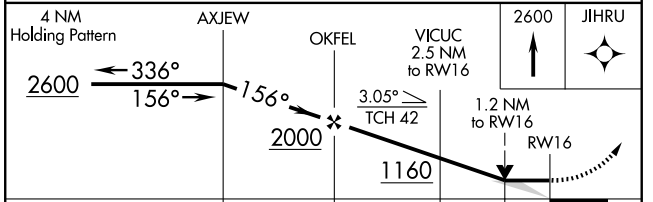
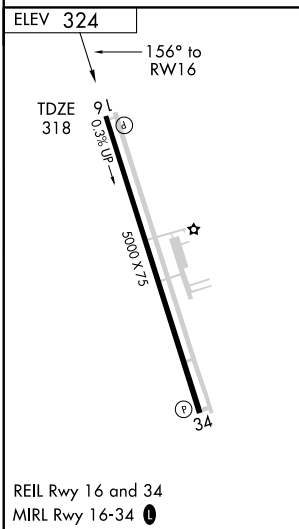
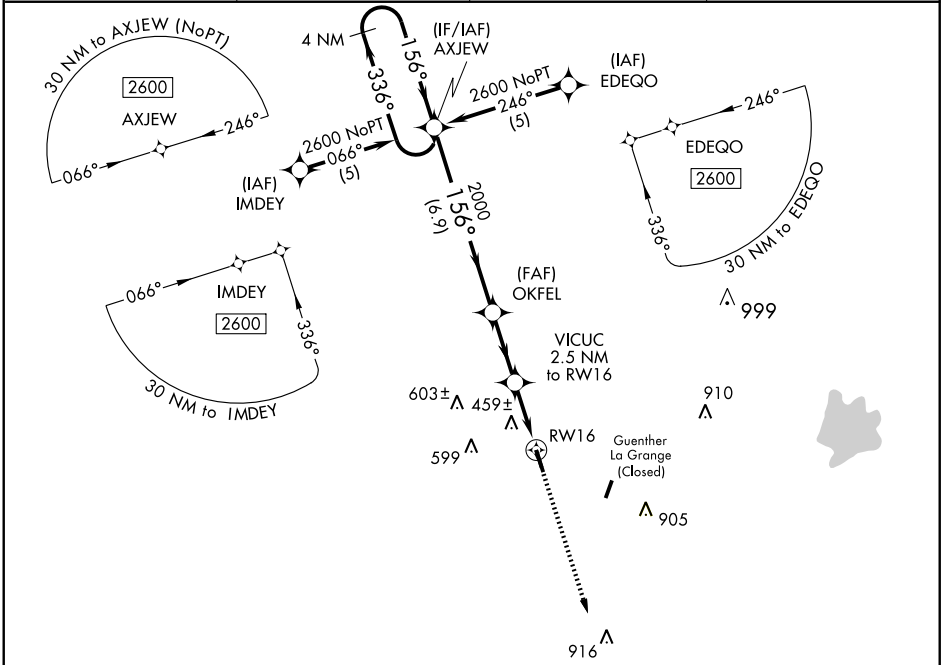
RNAV (GPS) RWY 16

LA GRANGE/FAYETTE RGNL AIR CENTER (3T5)

APP CRS 156°	Rwy Idg 5001
	TDZE 318
	Apt Elev 324

▼ DME/DME RNP-0.3 NA. When local altimeter setting not received, use Giddings-Lee County altimeter settings and increase all MDA 60 feet. **▲** MISSED APPROACH: Climb to 2600 direct JIHRU and hold.

AWOS-3 124.175	HOUSTON CENTER 132.15 279.6	UNICOM 122.7 (CTAF) 0	GCO 121.725
--------------------------	---------------------------------------	---------------------------------	-----------------------



CATEGORY	A	B	C	D
LNAV MDA	720-1	402 (400-1)	720-1¼ 402 (400-1¼)	NA
CIRCLING	780-1	456 (500-1)	780-1½ 456 (500-1½)	NA

LA GRANGE, TEXAS
Amdt 1 09239

LA GRANGE/FAYETTE RGNL AIR CENTER (3T5)
29°54'N-96°57'W
RNAV (GPS) RWY 16

SC-5, 22 OCT 2009 to 19 NOV 2009

SC-5, 22 OCT 2009 to 19 NOV 2009