

WILMINGTON, OHIO

AL-9153 (FAA)

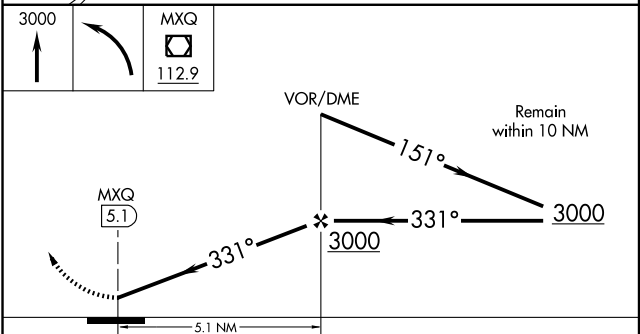
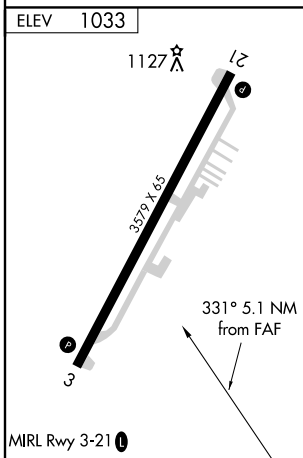
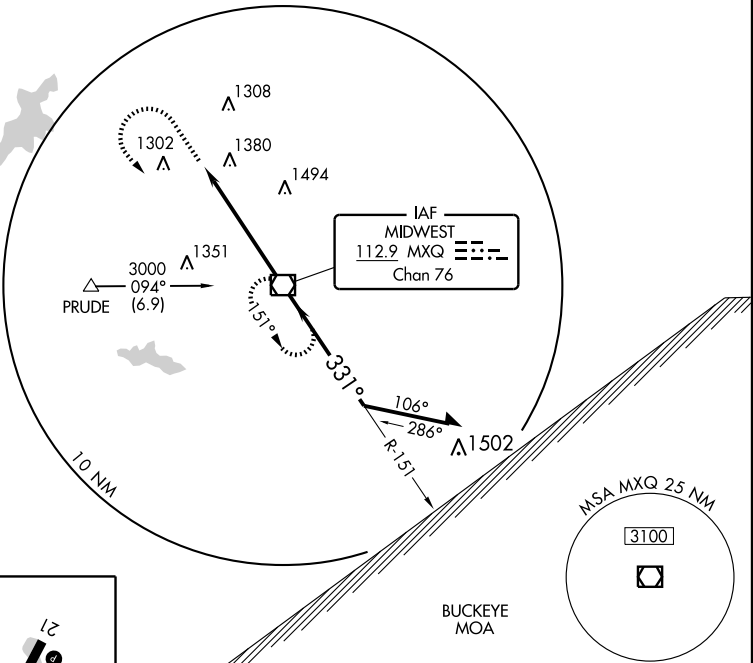
VOR-A

WILMINGTON/CLINTON FIELD (I66)

VOR/DME MXQ 112.9 Chan 76	APP CRS 331°	Rwy Idg TDZE Apt Elev N/A N/A 1033
--	------------------------	--

<p>▼ If local altimeter setting not received, use Wilmington/Airborne Airport altimeter setting and increase all MDAs 20 feet.</p> <p>▲ NA</p>	<p>MISSED APPROACH: Climb to 3000 then left turn direct MXQ VOR/DME and hold.</p>
--	---

AWOS-3 124.175	DAYTON APP CON 118.85 126.5 127.225 327.1	UNICOM 123.0 (CTAF)
--------------------------	---	-------------------------------



FAF to MAP 5.1 NM							
Knots	60	90	120	150	180		
Min:Sec	5:06	3:24	2:33	2:02	1:42		
CATEGORY	A		B		C	D	
CIRCLING	1740-1		707 (800-1)		1740-2	707 (800-2)	NA

WILMINGTON, OHIO

WILMINGTON/CLINTON FIELD (I66)

Amdt 2 09295

39°30'N - 83°52'W

VOR-A

EC-2, 22 OCT 2009 to 19 NOV 2009

EC-2, 22 OCT 2009 to 19 NOV 2009