

# RNAV (GPS) RWY 3

WILMINGTON/CLINTON FIELD (I66)

APP CRS	Rwy Idg	<b>3579</b>
<b>033°</b>	TDZE	<b>1033</b>
	Apt Elev	<b>1033</b>

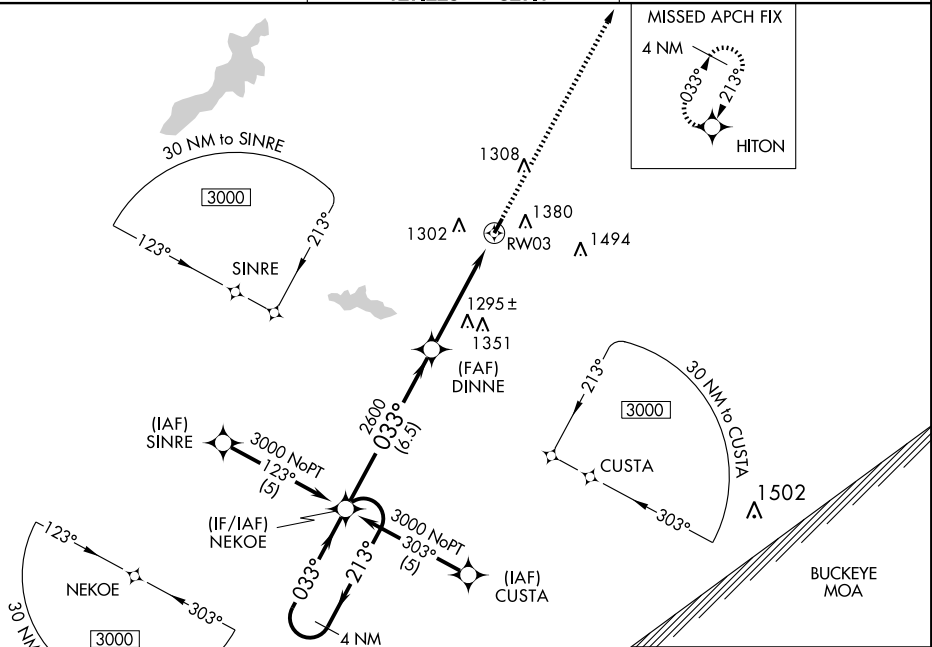
**▼** If local altimeter setting not received, use Wilmington/Airborne Airport altimeter setting and increase all MDAs 20 feet. DME/DME RNP-0.3 NA.  
**▲ NA** Procedure NA at night. Visibility reduction by helicopters NA.

MISSED APPROACH: Climb to 3000 direct HITON and hold.

AWOS-3  
**124.175**

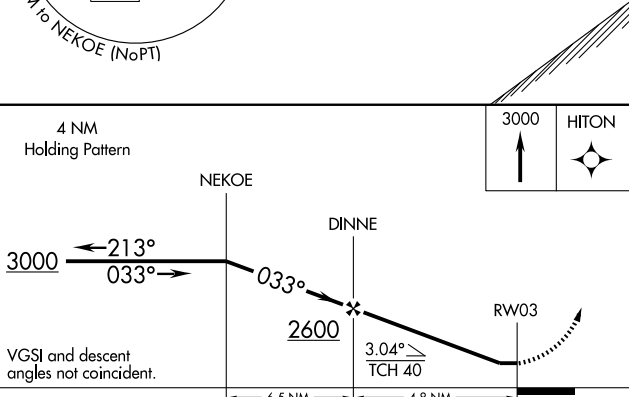
DAYTON APP CON  
**118.85 126.5**  
**127.225 327.1**

UNICOM  
**123.0 (CTAF) 1**



EC-2, 22 OCT 2009 to 19 NOV 2009

EC-2, 22 OCT 2009 to 19 NOV 2009



CATEGORY	A	B	C	D
LNVA MDA	1600-1	567 (600-1)	1600-1½ 567 (600-1½)	NA
CIRCLING	1740-1	707 (800-1)	1740-2 707 (800-2)	NA

