

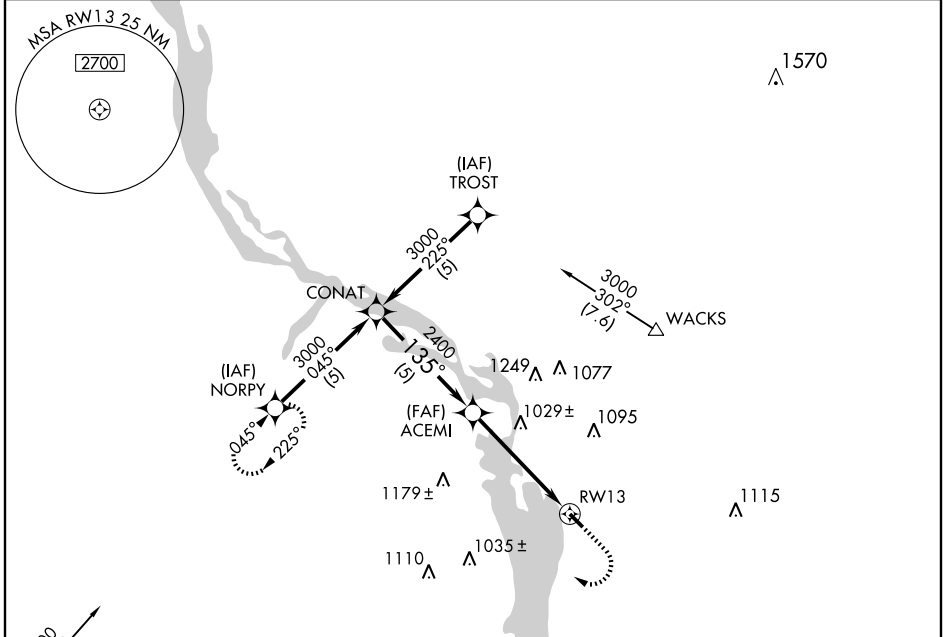
# GPS RWY 13

SAVANNA/ TRI-TOWNSHIP (SF'Y)

APP CRS <b>135°</b>	Rwy Idg <b>4001</b>
	TDZE <b>616</b>
	Apt Elev <b>616</b>

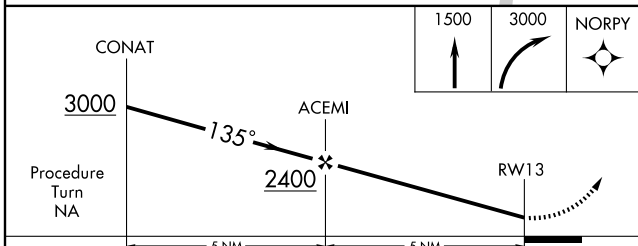
**▲ NA** Use Sterling Rockfalls altimeter setting. MISSED APPROACH: Climb to 1500 then climbing right turn to 3000 direct NORPY WP and hold.

AWOS-3 <b>118.650</b>	QUAD CITY APP CON* <b>125.95 257.8</b>	UNICOM <b>122.7 (CTAF) 0</b>
--------------------------	---	---------------------------------



EC-3, 22 OCT 2009 to 19 NOV 2009

EC-3, 22 OCT 2009 to 19 NOV 2009



CATEGORY	A	B	C	D
S-13	1360-1 744 (800-1)	1360-1¼ 744 (800-1¼)	NA	
CIRCLING	1360-1 744 (800-1)	1360-1¼ 744 (800-1¼)	NA	

