

WEST PALM BEACH, FLORIDA

AL-9151 (FAA)

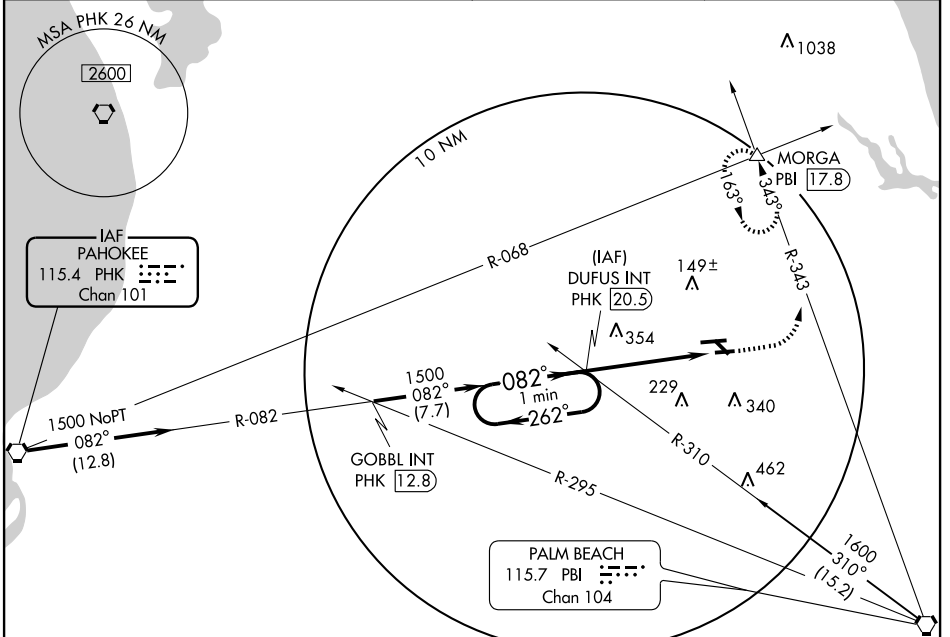
VORTAC PHK 115.4 Chan 101	APP CRS 082°	Rwy Idg TDZE 23 Apt Elev 23	4300
---	------------------------	---	-------------

WEST PALM BEACH/
NORTH PALM BEACH COUNTY GENERAL AVIATION (F45)

VOR RWY 8R

NA Use Palm Beach altimeter setting. MISSED APPROACH: Climb to 900 then climbing left turn to 2000 via PBI VORTAC R-343 to MORGA Int/17.8 DME and hold.

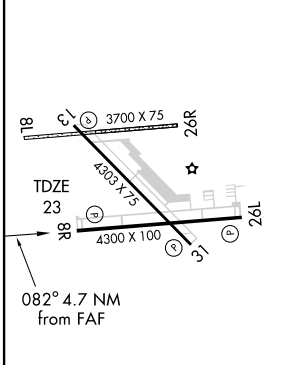
AWOS-3 119.975	PALM BEACH APP CON 124.6 317.4	CLNC DEL 120.825	UNICOM 123.075 (CTAF) 0
--------------------------	--	----------------------------	-----------------------------------



SE-3, 22 OCT 2009 to 19 NOV 2009

SE-3, 22 OCT 2009 to 19 NOV 2009

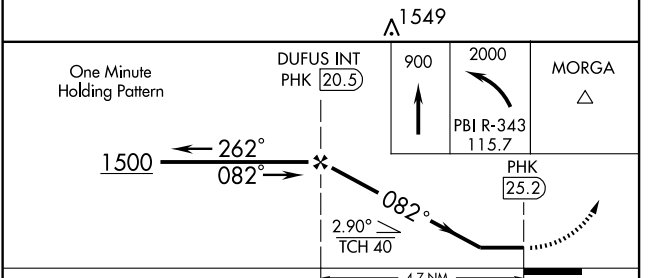
ELEV 23



HIRL Rwy 8R-26L and 13-31
REIL Rwy 8R, 13, 26L and 31

FAF to MAP 4.7 NM

Knots	60	90	120	150	180
Min:Sec	4:42	3:08	2:21	1:53	1:34



CATEGORY	A	B	C	D
S-8R	700-1 677 (700-1)	700-1¼ 677 (700-1¼)	700-2 677 (700-2)	700-2¼ 677 (700-2¼)
CIRCLING	700-1 677 (700-1)	700-1¼ 677 (700-1¼)	700-2 677 (700-2)	700-2¼ 677 (700-2¼)

WEST PALM BEACH, FLORIDA
Amdt 1A 09183

WEST PALM BEACH/ NORTH PALM BEACH COUNTY GENERAL AVIATION (F45)
26° 51' N-80° 13' W

VOR RWY 8R