

WEST PALM BEACH, FLORIDA

AL-9151 (FAA)

WASS CH 93910 W26A	APP CRS 269°	Rwy Idg 4300 TDZE 22 Apt Elev 22
--	------------------------	---

WEST PALM BEACH/
NORTH PALM BEACH COUNTY GENERAL AVIATION (F45)

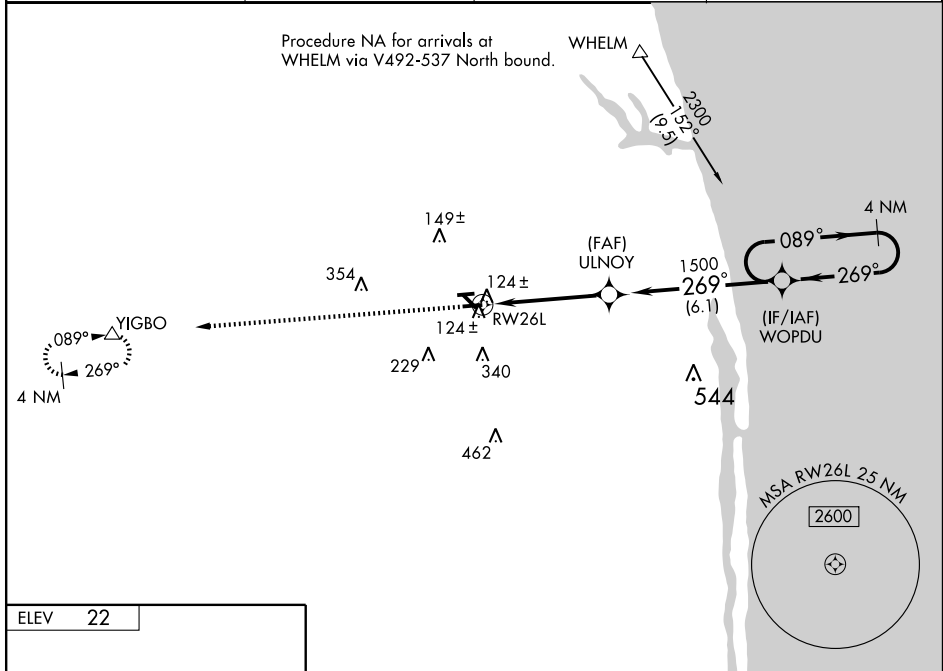
RNAV (GPS) RWY 26L

▼
▲ NA

For uncompensated Baro-VNAV systems, LNAV/VNAV NA below -15°C (5°F) or above 48°C (118°F). DME/DME RNP-0.3 NA. Visibility reduction by helicopters NA. When local altimeter setting not received, use Palm Beach Intl altimeter setting and increase all DA 28 feet and MDA 40 feet and increase LNAV/VNAV all Cats. visibility and Circling Cat. D visibility ¼ mile. Baro-VNAV and VDP NA when using Palm Beach Intl altimeter setting.

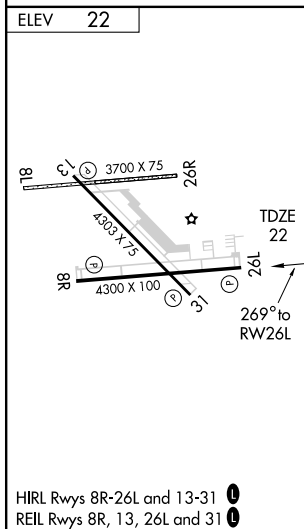
MISSED APPROACH:
Climb to 2500 direct YIGBO and hold.

AWOS-3 119.975	PALM BEACH APP CON 124.6 317.4	CLNC DEL 120.825	UNICOM 123.075 (CTAF) 📶
--------------------------	--	----------------------------	--



SE-3, 22 OCT 2009 to 19 NOV 2009

SE-3, 22 OCT 2009 to 19 NOV 2009



ELEV 22	2500	YIGBO	* LNAV Only	WOPDU	4 NM Holding Pattern
				ULNOY	
			* 1 NM to RWY 26L		
					089° → 2300
					← 269°
					GS 3.00° TCH 40
					1 NM — 3.5 NM — 6.1 NM
CATEGORY		A	B	C	D
LPV DA			340-1¼	318 (400-1¼)	
LNAV/VNAV DA			394-1¼	372 (400-1¼)	
LNAV MDA			380-1	358 (400-1)	380-1¼ 358 (400-1¼)
CIRCLING		460-1 438 (500-1)	480-1 458 (500-1)	480-1½ 458 (500-1½)	680-2 658 (700-2)

WEST PALM BEACH, FLORIDA
Orig 09183

WEST PALM BEACH/ NORTH PALM BEACH COUNTY GENERAL AVIATION (F45)
26° 51' N-80° 13' W

RNAV (GPS) RWY 26L