

WEST PALM BEACH, FLORIDA

AL-9151 (FAA)

WASS CH 40310 W13A	APP CRS 139°	Rwy Idg 4303 TDZE 22 Apt Elev 22
--	------------------------	---

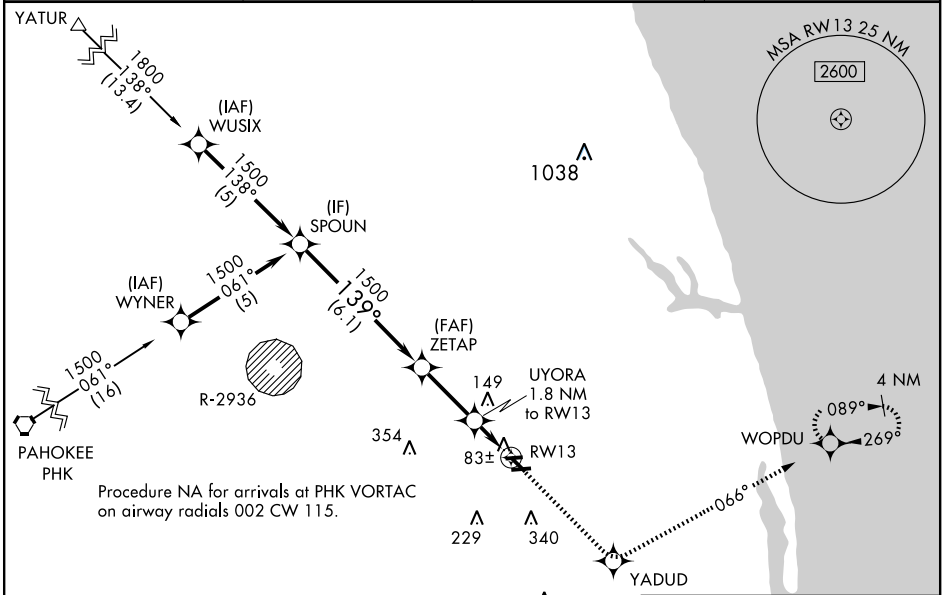
WEST PALM BEACH/
NORTH PALM BEACH COUNTY GENERAL AVIATION (F45)

RNAV (GPS) RWY 13

Baro-VNAV NA when using Palm Beach Intl altimeter setting. For uncompensated Baro-VNAV systems, LNAV/VNAV NA below -15°C (5°F) or above 48°C (118°F). DME/DME RNP-0.3 NA. Visibility reduction by helicopters NA. When local altimeter settings not received, use Palm Beach Intl altimeter setting and increase all DA 28 feet and all MDA 40 feet and increase LPV all Cats. visibility and Circling Cat. D visibility ¼ mile.

MISSED APPROACH:
Climb to 2300 direct YADUD and via 066° track to WOPDU and hold.

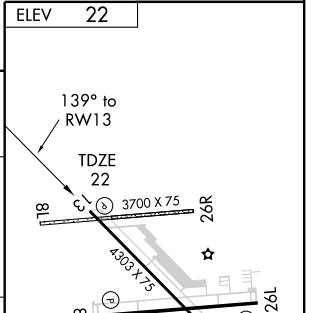
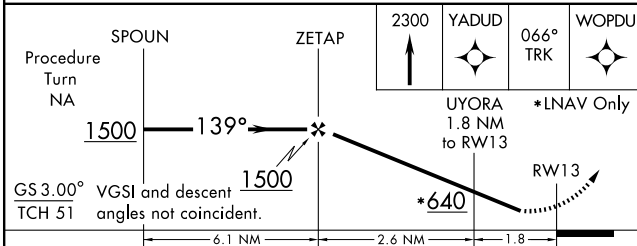
AWOS-3 119.975	PALM BEACH APP CON 124.6 317.4	CLNC DEL 120.825	UNICOM 123.075 (CTAF)
---------------------------------	---	-----------------------------------	--



SE-3, 22 OCT 2009 to 19 NOV 2009

SE-3, 22 OCT 2009 to 19 NOV 2009

ELEV	22
------	----



CATEGORY	A	B	C	D
LPV DA	324-1 302 (400-1)			
LNAV/VNAV DA	384-1¼ 362 (400-1¼)			
LNAV MDA	380-1 358 (400-1)		380-1¼ 358 (400-1¼)	
CIRCLING	460-1 438 (500-1)	480-1 458 (500-1)	480-1½ 458 (500-1½)	680-2 658 (700-2)

HIRL Rwy 8R-26L and 13-31
REIL Rwy 8R, 13, 26L and 31

WEST PALM BEACH, FLORIDA
Orig-A 09183

WEST PALM BEACH/ NORTH PALM BEACH COUNTY GENERAL AVIATION (F45)

26° 51' N-80° 13' W

RNAV (GPS) RWY 13