

WEST PALM BEACH, FLORIDA

AL-9151 (FAA)

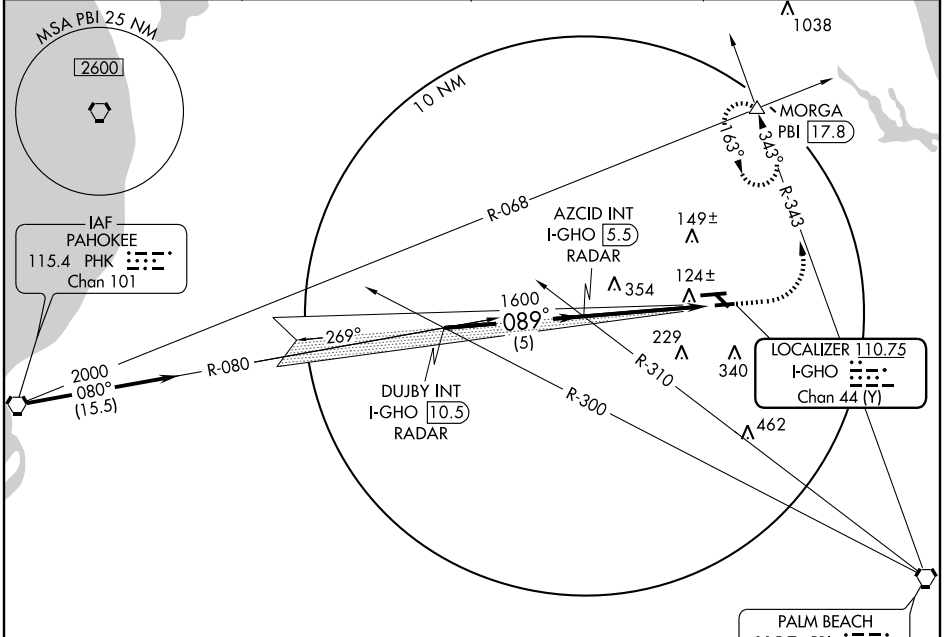
LOC/DME I-GHO 110.75 Chan 44 (Y)	APP CRS 089°	Rwy Idg TDZE Apt Elev	4300 23 23
--	------------------------	-----------------------------	---------------------------------------

WEST PALM BEACH/
NORTH PALM BEACH COUNTY GENERAL AVIATION (F45)

ILS RWY 8R

NA Use Palm Beach Intl altimeter setting. MISSED APPROACH: Climb to 500 then climbing left turn to 2000 via PBI R-343 to MORGA Int/17.8 DME and hold.

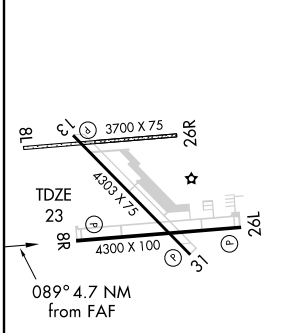
AWOS-3 119.975	PALM BEACH APP CON 124.6 317.4	CLNC DEL 120.825	UNICOM 123.075 (CTAF) 0
--------------------------	--	----------------------------	--



SE-3, 22 OCT 2009 to 19 NOV 2009

SE-3, 22 OCT 2009 to 19 NOV 2009

ELEV 23



HIRL Rwy 8R-26L and 13-31	0
REIL Rwy 8R, 13, 26L and 31	0
FAF to MAP 4.7 NM	
Knots	60 90 120 150 180
Min:Sec	4:42 3:08 2:21 1:53 1:34

DUJBY INT I-GHO 10.5 RADAR 2000 Procedure Turn NA GS 3.00° TCH 43	AZCID INT I-GHO 5.5 RADAR 1585 1600	500 2000 PBI R-343 115.7	MORGA △	I-GHO 0.8
CATEGORY	A	B	C	D
S-ILS 8R	251- ³ / ₄ 228 (300- ³ / ₄)			
S-LOC 8R	420-1 397 (400-1)		420-1 ¹ / ₄ 397 (400-1 ¹ / ₄)	
CIRCLING	460-1 437 (500-1)	480-1 457 (500-1)	480-1 ¹ / ₂ 457 (500-1 ¹ / ₂)	680-2 657 (700-2)

WEST PALM BEACH, FLORIDA
Orig 09183

WEST PALM BEACH/ NORTH PALM BEACH COUNTY GENERAL AVIATION (F45)
26° 51' N-80° 13' W

ILS RWY 8R