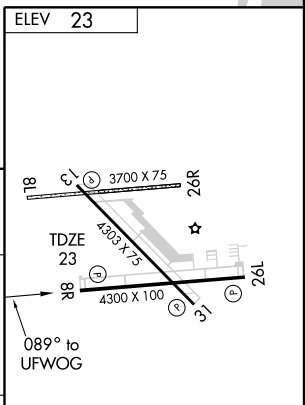
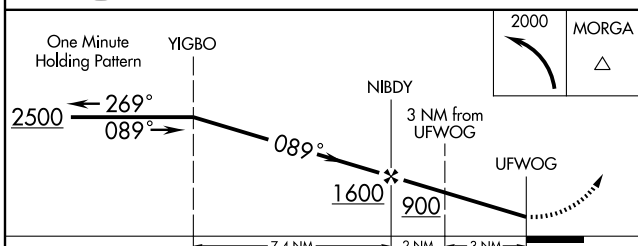
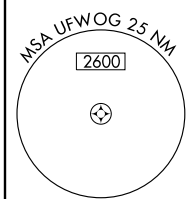
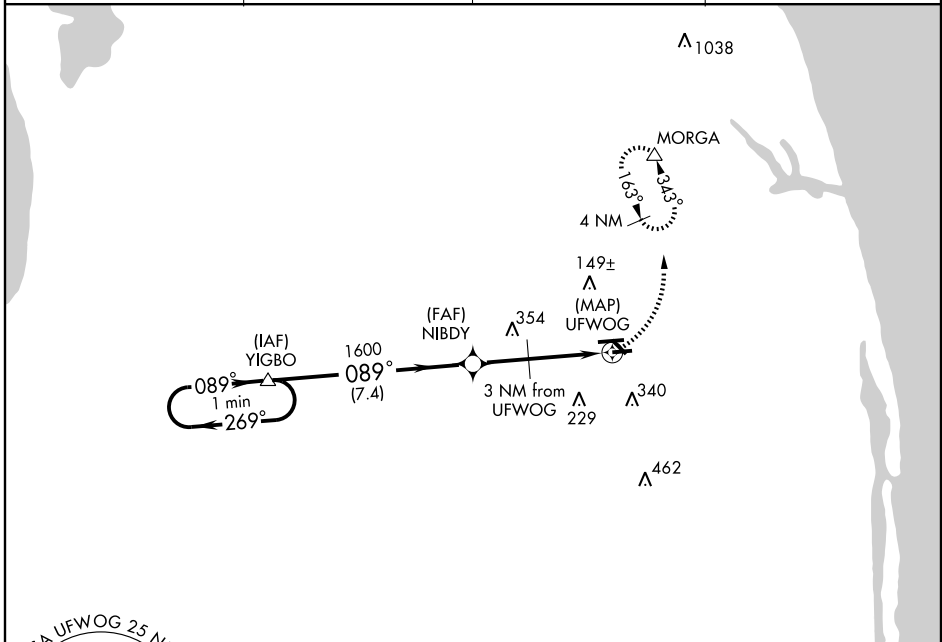


GPS RWY 8R

WEST PALM BEACH/ NORTH PALM BEACH COUNTY GENERAL AVIATION (F45)

APP CRS	Rwy Idg	4300
089°	TDZE	23
	Apt Elev	23

<p>▼ Use Palm Beach Intl altimeter setting.</p> <p>▲ NA</p>		<p>MISSED APPROACH: Climbing left turn to 2000 direct MORGA WP and hold.</p>	
AWOS-3	PALM BEACH APP CON	CLNC DEL	UNICOM
119.975	124.6 317.4	120.825	123.075 (CTAF) 0



CATEGORY	A	B	C	D
S-8R	420-1 397 (400-1)		420-1¼ 397 (400-1¼)	
CIRCLING	460-1 437 (500-1)	480-1 457 (500-1)	480-1½ 457 (500-1½)	680-2 657 (700-2)

HIRL Rwy 8R-26L and 13-31
REIL Rwy 8R, 13, 26L and 31

GPS RWY 8R

SE-3, 22 OCT 2009 to 19 NOV 2009

SE-3, 22 OCT 2009 to 19 NOV 2009