

RNAV (GPS) RWY 19

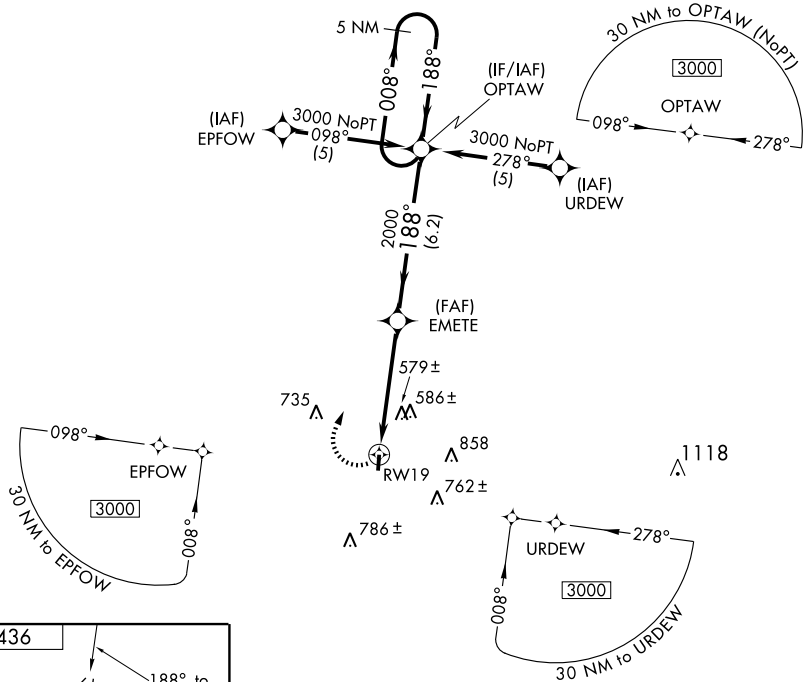
SOMERVILLE/FAYETTE COUNTY (FYE)

APP CRS	Rwy Idg	5000
188°	TDZE	431
	Apt Elev	436

NA If local altimeter setting not received, use Memphis Intl altimeter setting and increase all MDAs 100 feet. VDP NA when using Memphis Intl altimeter setting. DME/DME RNP-0.3 NA.

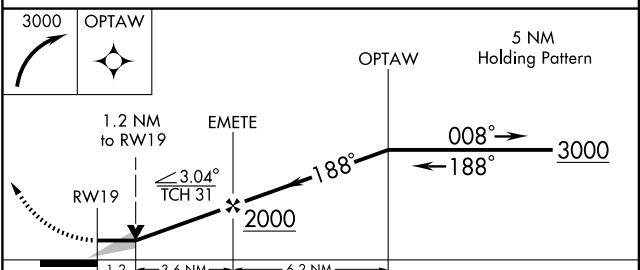
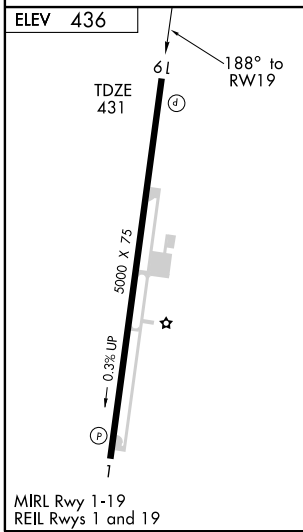
MISSED APPROACH: Climbing right turn to 3000 direct OPTAW and hold.

AWOS-3 119.875	MEMPHIS APP CON 125.8 338.3	CTAF 122.9
--------------------------	---------------------------------------	----------------------



SE-1, 22 OCT 2009 to 19 NOV 2009

SE-1, 22 OCT 2009 to 19 NOV 2009



CATEGORY	A	B	C	D
LNAV MDA	840-1	409 (500-1)	840-1¼ 409 (500-1¼)	NA
CIRCLING	900-1 464 (500-1)	920-1 484 (500-1)	920-1½ 484 (500-1½)	NA