

**GPS RWY 18**  
BELLE PLAINE MUNI (T/ZT)

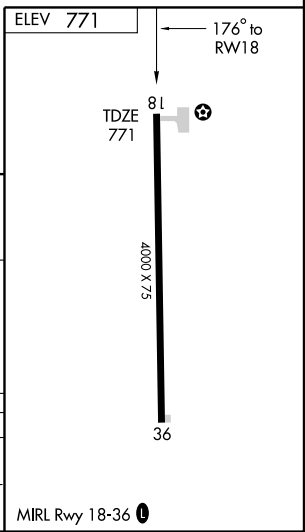
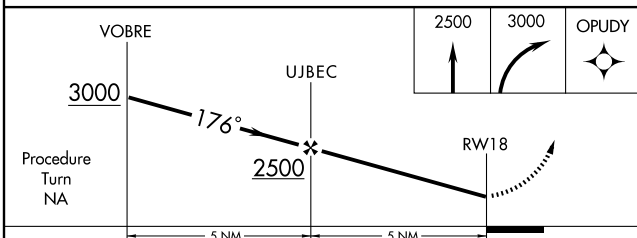
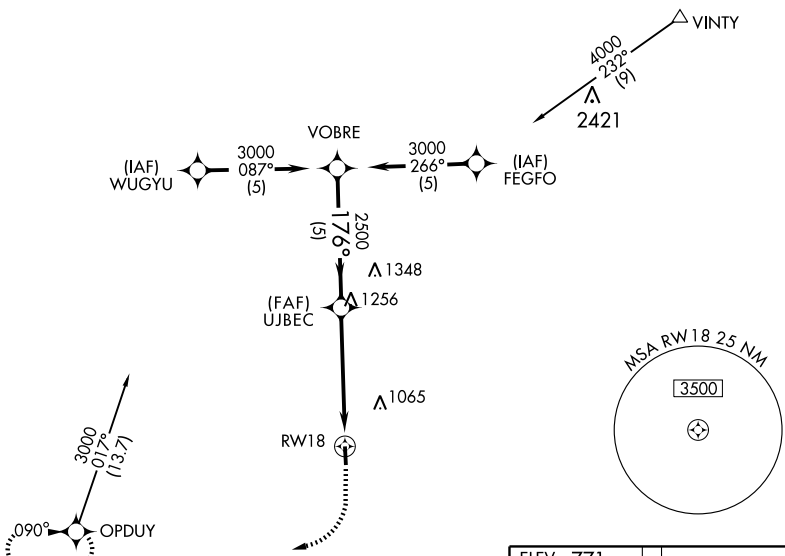
APP CRS <b>176°</b>	Rwy Idg <b>4000</b>
	TDZE <b>771</b>
	Apt Elev <b>771</b>

▼ Use Cedar Rapids altimeter setting.  
 ▲ NA  
 MISSED APPROACH: Climb to 2500, then climbing right turn to 3000 direct OPDUY WP and hold.

CEDAR RAPIDS APP CON * <b>119.7 266.8</b>	CTAF <b>122.9</b>	<b>122.8</b> ①
--	----------------------	----------------

NC-3, 22 OCT 2009 to 19 NOV 2009

NC-3, 22 OCT 2009 to 19 NOV 2009



CATEGORY	A	B	C	D
S-18	1400-1	629 (700-1)		NA
CIRCLING	1420-1 649 (700-1)	1460-1 689 (700-1)		NA