

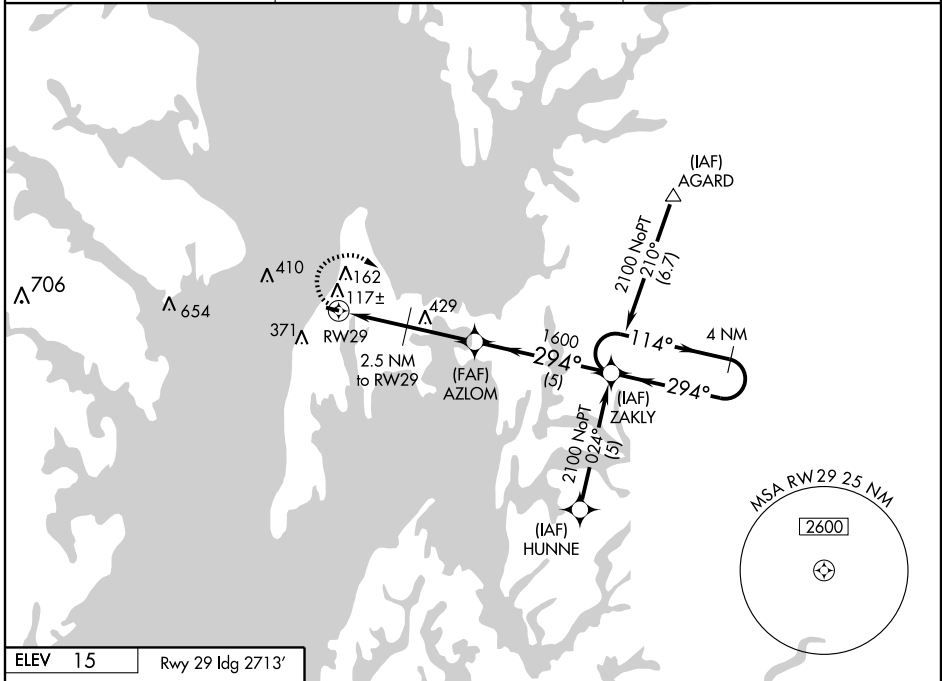
RNAV (GPS) RWY 29

STEVENSVILLE/BAY BRIDGE (W29)

APP CRS	Rwy ldg	2713
294°	TDZE	15
	Apt Elev	15

▽ Obtain local altimeter setting on CTAF; when not received, use Easton/Newnam Field altimeter setting minimums.
▲ NA MISSED APPROACH: Climbing right turn to 2100 direct ZAKLY WP and hold.
 GPS or RNP-0.3 required. DME/DME RNP-0.3 NA.

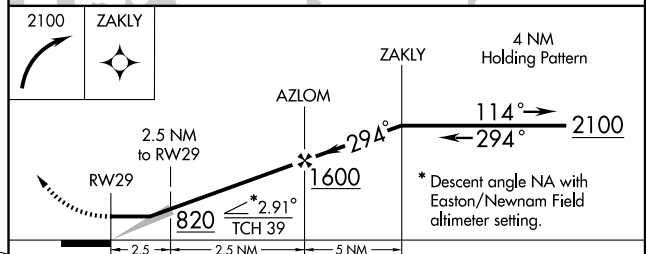
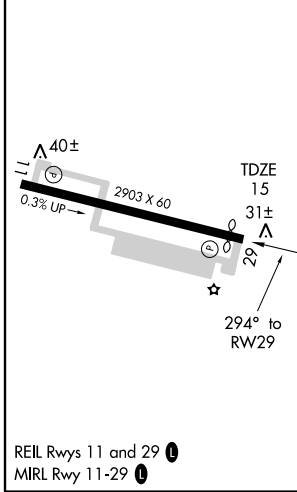
AWOS-3 120.575	POTOMAC APP CON 119.0 282.275	UNICOM 123.0 (CTAF) 0
--------------------------	---	---------------------------------



NE-3, 22 OCT 2009 to 19 NOV 2009

NE-3, 22 OCT 2009 to 19 NOV 2009

ELEV 15	Rwy 29 ldg 2713'
---------	------------------



CATEGORY	A	B	C	D
LNAV MDA	380-1 365 (400-1)		NA	
CIRCLING	460-1 445 (500-1)	480-1 465 (500-1)	NA	
EASTON/NEWNAM FIELD ALTIMETER SETTING MINIMUMS				
LNAV MDA	420-1 405 (500-1)		NA	
CIRCLING	500-1 485 (500-1)		NA	