

# RNAV (GPS) RWY 11

STEVENSVILLE/BAY BRIDGE (W29)

APP CRS	Rwy Idg	<b>2903</b>
<b>129°</b>	TDZE	<b>15</b>
	Apt Elev	<b>15</b>

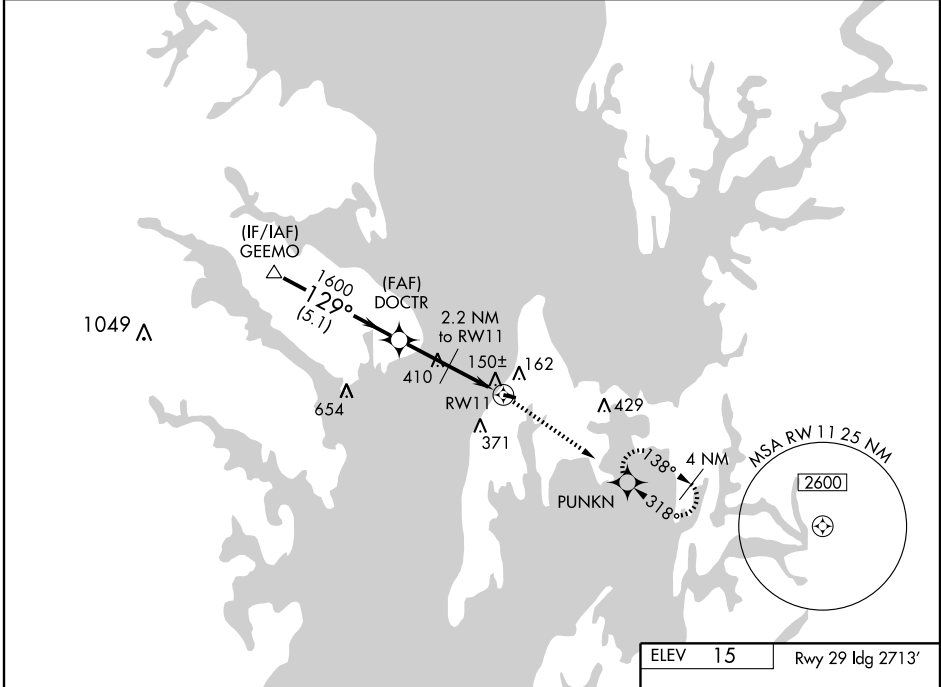
**▽** Obtain local altimeter setting on CTAF; when not received, use Easton/Newnam Field altimeter setting.  
**△** NA

**MISSED APPROACH:** Climb to 1500 direct PUNKN WP and hold.

AWOS-3  
**120.575**

POTOMAC APP CON  
**119.0 282.275**

UNICOM  
**123.0 (CTAF) 0**



NE-3, 22 OCT 2009 to 19 NOV 2009

NE-3, 22 OCT 2009 to 19 NOV 2009

GEEMO		DOCTR		1500	PUNKN
2200		1600		↑	☆
VGSI and descent angles not coincident.		* 900 when using Easton/Newnam Field altimeter setting.		2.2 NM to RW11	
# Descent angle NA with Easton/Newnam Field altimeter setting.		# 3.49° TCH 38		RW11	
Procedure Turn NA		* 840		2.2 NM	
5.1 NM		2 NM		2.2 NM	
CATEGORY	A	B	C	D	
LNAV MDA	400-1 385 (400-1)			NA	
CIRCLING	460-1	480-1		NA	
	445 (500-1)	465 (500-1)			
EASTON/NEWNAM FIELD ALTIMETER SETTING MINIMUMS					
LNAV MDA	460-1 445 (500-1)			NA	
CIRCLING	500-1 485 (500-1)			NA	

ELEV	15	Rwy Idg	2713'
------	----	---------	-------

REIL Rwy 11 and 29 **0**  
 MIRL Rwy 11-29 **0**