

# RNAV (GPS) RWY 32

BEDFORD COUNTY (HMZ)

APP CRS <b>317°</b>	Rwy Idg <b>5005</b>
	TDZE <b>1161</b>
	Apt Elev <b>1163</b>

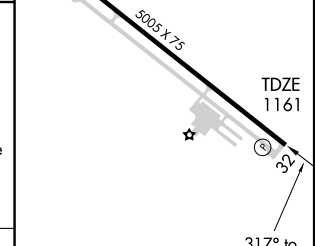
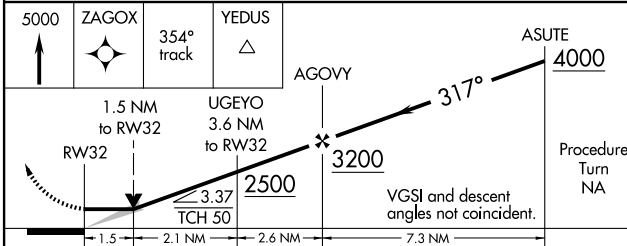
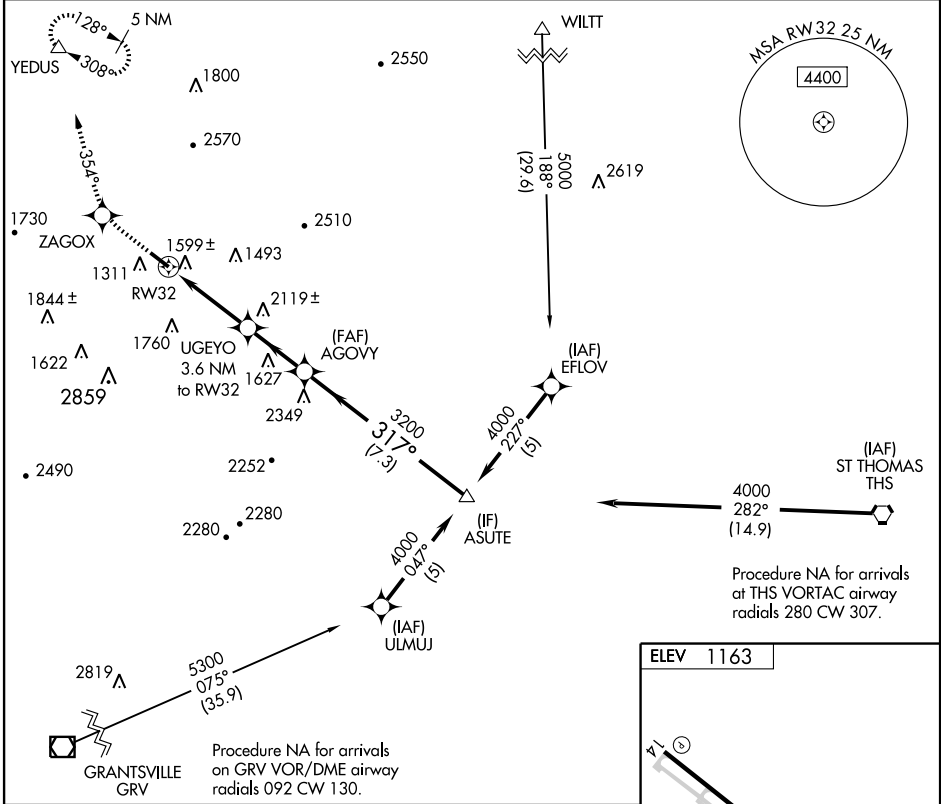
**▼** DME/DME RNP-0.3 NA. VDP NA when using Altoona altimeter setting. When local altimeter setting not received, use Altoona altimeter setting and increase  
**▲** NA all MDA 100 feet, LNAV visibility Cats B/C/D ¼ mile and Circling Cat C ½ mile.

**MISSED APPROACH:** Climb to 5000 direct ZAGOX and via 354° track to YEDUS and hold, continue climb-in-hold to 5000.

AWOS-3 <b>123.675</b>	CLEVELAND CENTER <b>124.4 327.1</b>	UNICOM <b>122.7 (CTAF)</b>
--------------------------	----------------------------------------	-------------------------------

NE-4, 22 OCT 2009 to 19 NOV 2009

NE-4, 22 OCT 2009 to 19 NOV 2009



CATEGORY	A	B	C	D
LNAV MDA	1860-1	699 (700-1)	1860-2 699 (700-2)	1860-2 ¼ 699 (700-2 ¼)
CIRCLING	1900-1 737 (800-1)	1960-1 ¼ 797 (800-1 ¼)	1960-2 ¼ 797 (800-2 ¼)	2120-3 957 (1000-3)

REIL Rwy 14 and 32 **0**  
 MIRL Rwy 14-32 **0**