

LEADVILLE, COLORADO

AL-9146 (FAA)

APP CRS 161°	Rwy Idg 6400
	TDZE 9928
	Apt Elev 9928

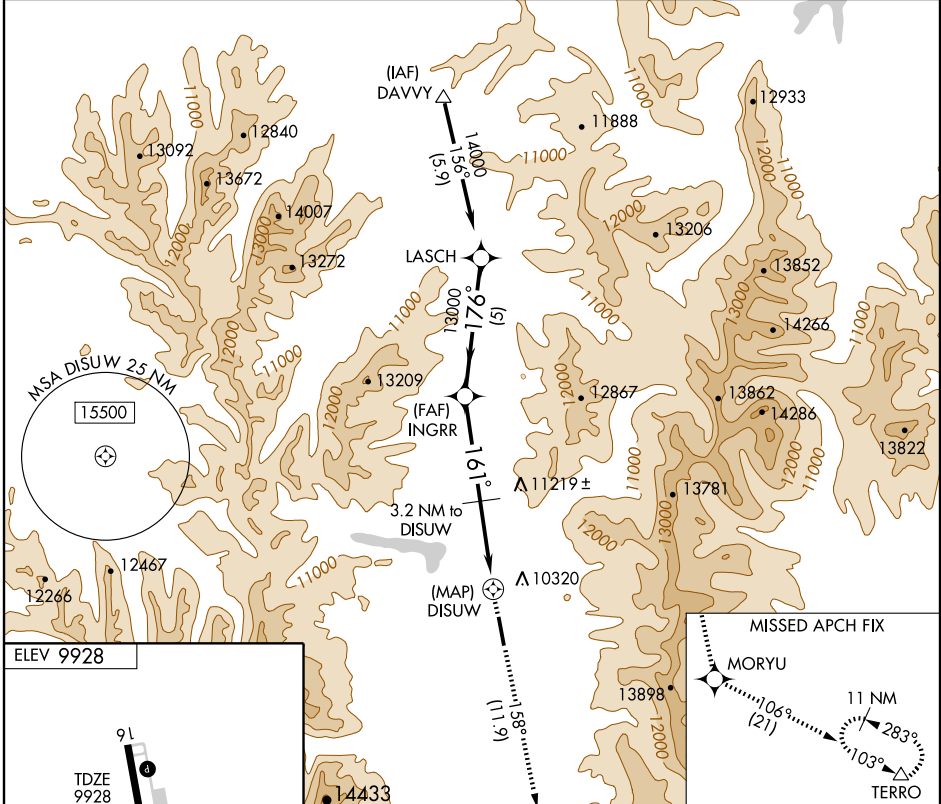
GPS RWY 16

LEADVILLE/LAKE COUNTY (LXV)

NA

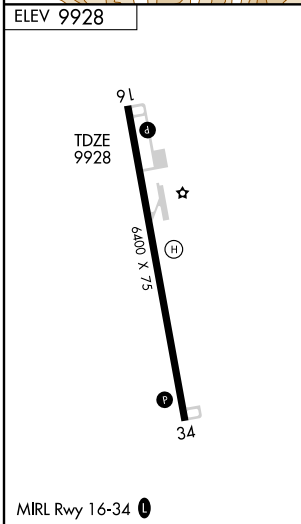
MISSED APPROACH: Climb to 16000 via 158° course to MORYU WP, then via 106° course to TERRO WP and hold.

ASOS 118.375	DENVER CENTER 119.85 363.15	UNICOM 122.8 (CTAF)
------------------------	---------------------------------------	-------------------------------



SW-1, 22 OCT 2009 to 19 NOV 2009

SW-1, 22 OCT 2009 to 19 NOV 2009



VGSI and descent angles not coincident.

CATEGORY	A	B	C	D
S-16	11360-1¼ 1432 (1500-1¼)	11360-1½ 1432 (1500-1½)	NA	
CIRCLING	11360-1¼ 1432 (1500-1¼)	11360-1½ 1432 (1500-1½)	NA	

LEADVILLE, COLORADO
Orig 09127

39°13'N - 106°19'W

LEADVILLE/ LAKE COUNTY (LXV)
GPS RWY 16