

PANHANDLE, TEXAS

AL-9145 (FAA)

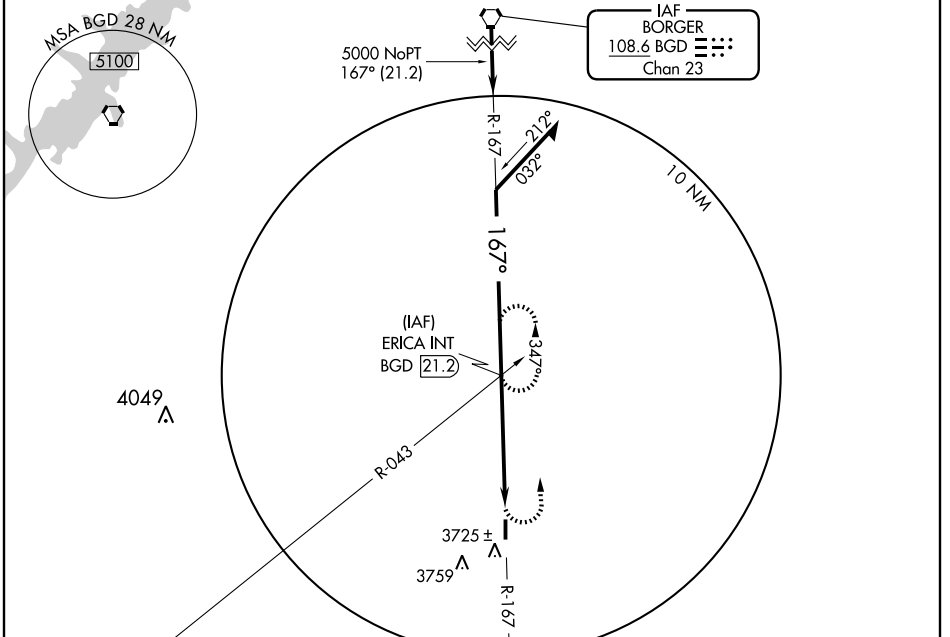
VORTAC BGD 108.6 Chan 23	APP CRS 167°	Rwy Idg TDZE Apt Elev	4405 3450 3452
---------------------------------------	------------------------	-----------------------------	---

VOR RWY 17

PANHANDLE-CARSON COUNTY (T45)

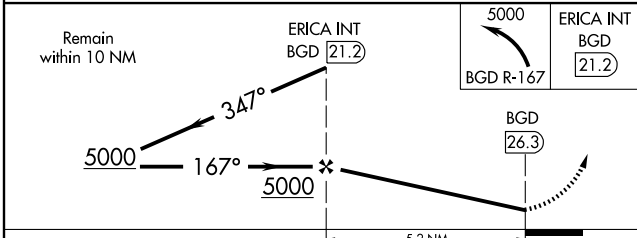
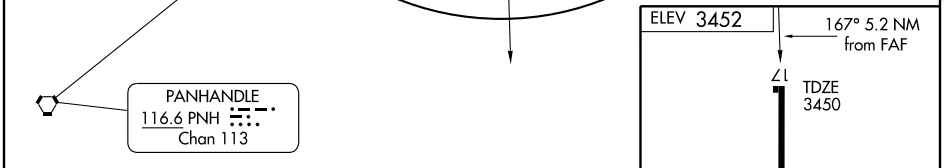
▲ NA Use Rick Husband Amarillo Intl altimeter setting. MISSED APPROACH: Climbing left turn to 5000 via BGD R-167 to ERICA Int 21.2 DME and hold.

AMARILLO APP CON * **119.5 307.0** UNICOM **122.7** (CTAF) **123.5** **0**



SC-2, 22 OCT 2009 to 19 NOV 2009

SC-2, 22 OCT 2009 to 19 NOV 2009



CATEGORY	A	B	C	D
S-17	3900-1 450 (500-1)	3900-1 ¼ 450 (500-1 ¼)	3900-1 ½ 450 (500-1 ½)	NA
CIRCLING	4140-1 688 (700-1)	4140-1 ¼ 688 (700-1 ¼)	4140-2 688 (700-2)	NA

MIRL Rwy 17-35 **0**

FAF to MAP 5.2 NM

Knots	60	90	120	150	180
Min:Sec	5:12	3:28	2:36	2:05	1:44

PANHANDLE, TEXAS
Orig 06215

35°22'N-101°22'W

PANHANDLE-CARSON COUNTY (T45)

VOR RWY 17