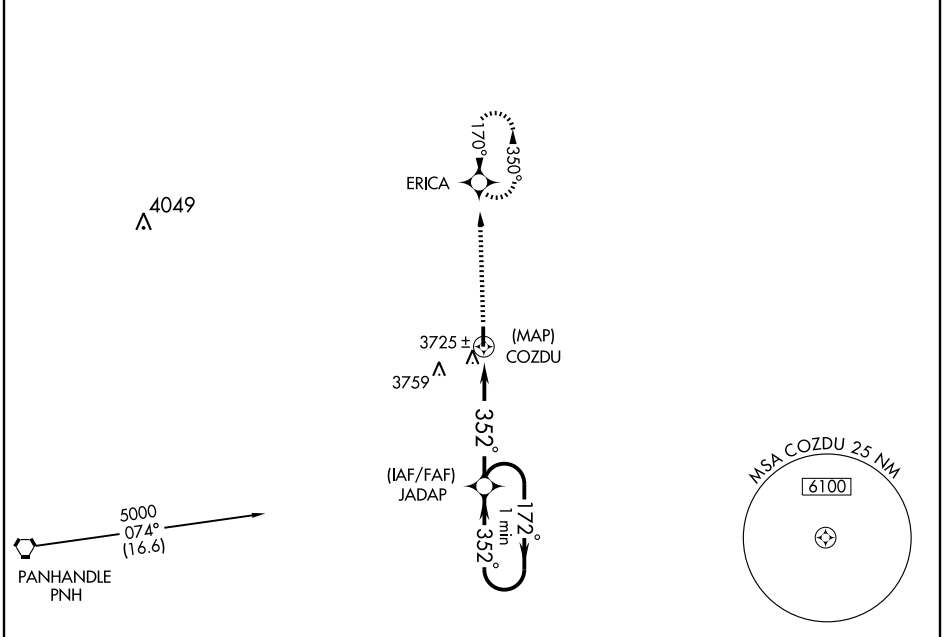


APP CRS	Rwy Idg	4405
352°	TDZE	3452
	Apt Elev	3452

GPS RWY 35
PANHANDLE-CARSON COUNTY (T45)

▲ NA Use Rick Husband Amarillo Intl altimeter setting. MISSED APPROACH: Climb to 5000 direct ERICA WP and hold.

AMARILLO APP CON* 119.5 307.0	UNICOM 122.7 (CTAF)	123.5
---	-------------------------------	--------------



SC-2, 22 OCT 2009 to 19 NOV 2009

SC-2, 22 OCT 2009 to 19 NOV 2009

5000		ERICA		JADAP		One Minute Holding Pattern	
COZDU		5000		5000		5000	
5 NM		352°		172°		352°	
CATEGORY	A	B	C	D	MIRL Rwy 17-35		
S-35	4100-1	648 (700-1)	4100-1 $\frac{3}{4}$ 648 (700-1 $\frac{3}{4}$)	NA	ELEV 3452		
CIRCLING	4140-1	688 (700-1)	4140-2 688 (700-2)	NA	TDZE 3452		