

RNAV (GPS) RWY 35

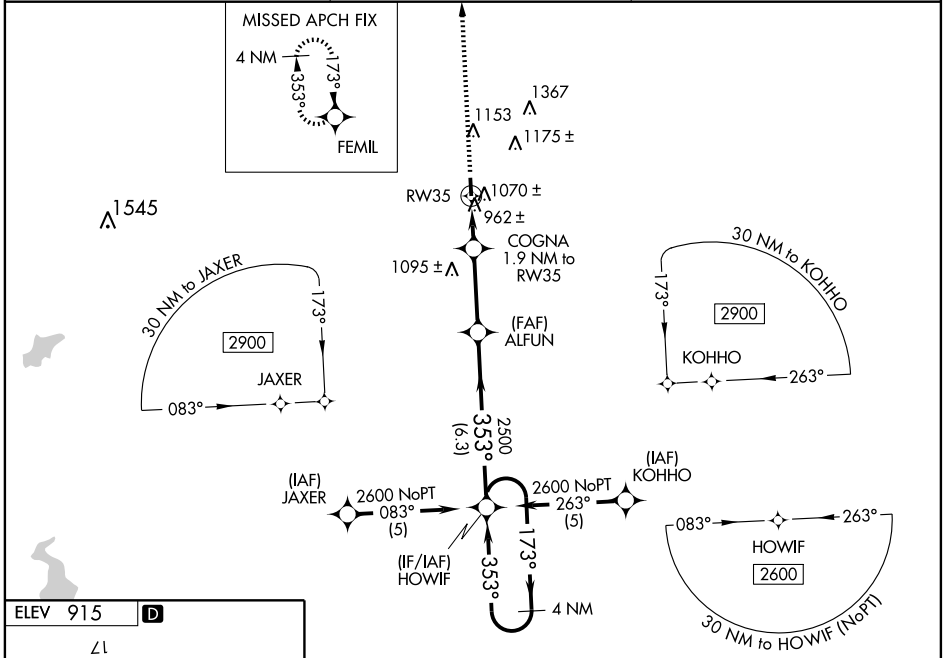
HARRISONVILLE/LAWRENCE SMITH MEMORIAL (L.R.Y)

WAAS CH 69406 W35A	APP CRS 353°	Rwy Idg TDZE Apt Elev	4000 900 915
--	------------------------	-----------------------------	---

▼ BARO-VNAV NA when using Charles B. Wheeler Downtown altimeter setting.
 For uncompensated BARO-VNAV systems, LNAV/VNAV NA below -1.6°C (4°F) or above 54°C (130°F). Visibility reduction by helicopters NA. DME/DME RNP-0.3 NA.
▲ When local altimeter setting not received, use Charles B. Wheeler Downtown altimeter setting and increase all DAs 98 feet and all MDAs 100 feet, and visibility LPV all Cats ½ mile, LNAV/VNAV all Cats ¼ mile, LNAV Cat C ¼ mile, and Circling Cat C ¼ mile.

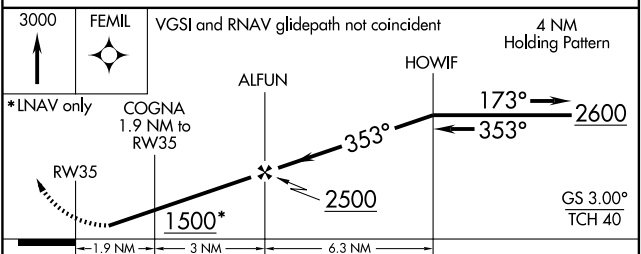
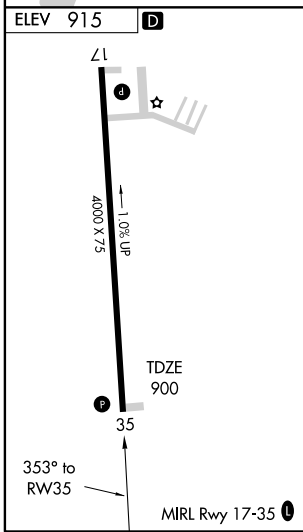
MISSED APPROACH: Climb to 3000 direct FEMIL and hold.

AWOS-3 119.975	KANSAS CITY CENTER 125.55 327.0	UNICOM 123.0 (CTAF)
--------------------------	---	-------------------------------



NC-3, 22 OCT 2009 to 19 NOV 2009

NC-3, 22 OCT 2009 to 19 NOV 2009



CATEGORY	A	B	C	D
LPV DA	1176-1 276 (300-1)			NA
LNAV/VNAV DA	1330-1 ¾ 430 (500-1¾)			NA
LNAV MDA	1320-1	420 (500-1)	1320-1¼ 420 (500-1¼)	NA
CIRCLING	1400-1 485 (500-1)	1460-1 545 (600-1)	1460-1½ 545 (600-1½)	NA