

RNAV (GPS) RWY 17

HARRISONVILLE/LAWRENCE SMITH MEMORIAL (L.R.Y)

APP CRS 173°	Rwy Idg 4000
	TDZE 915
	Apt Elev 915

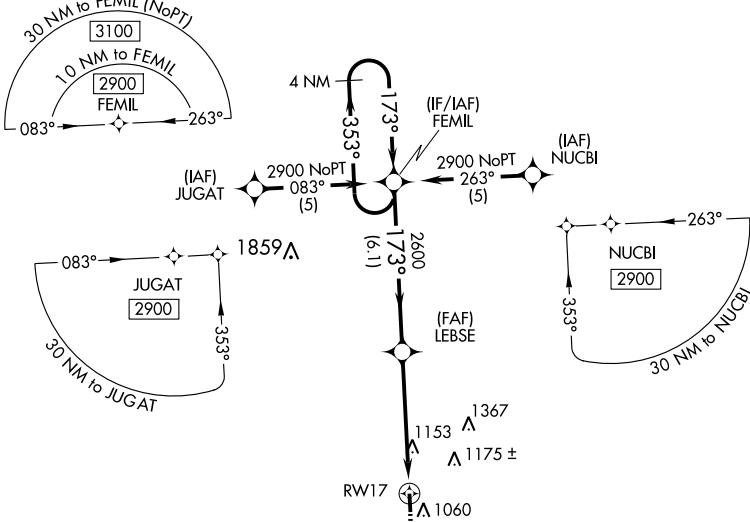
MISSED APPROACH: Climb to 2600 direct HOWIF and hold.

When local altimeter setting not received, use Charles B. Wheeler Downtown altimeter setting and increase all MDAs 100 feet, and visibility Cat. C ¼ mile. Visibility reduction by helicopters NA. DME/DME RNP-0.3 NA. When VGS1 inoperative, procedure NA at night.

AWOS-3
119.975

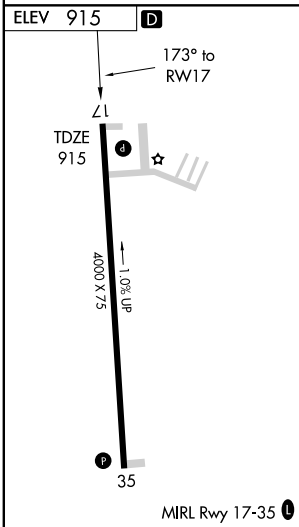
KANSAS CITY CENTER
125.55 327.0

UNICOM
123.0 (CTAF) 0



NC-3, 22 OCT 2009 to 19 NOV 2009

NC-3, 22 OCT 2009 to 19 NOV 2009



4 NM Holding Pattern				VGS1 and descent angles not coincident.	2600	HOWIF
2900 ← 353°				173° →	173°	
				6.1 NM	5.1 NM	
CATEGORY	A	B	C	D		
LNAV MDA	1420-1	505 (600-1)	1420-1½ 505 (600-1½)	NA		
CIRCLING	1420-1 505 (600-1)	1460-1 545 (600-1)	1460-1½ 545 (600-1½)	NA		

RNAV (GPS) RWY 17