

RNAV (GPS) RWY 30

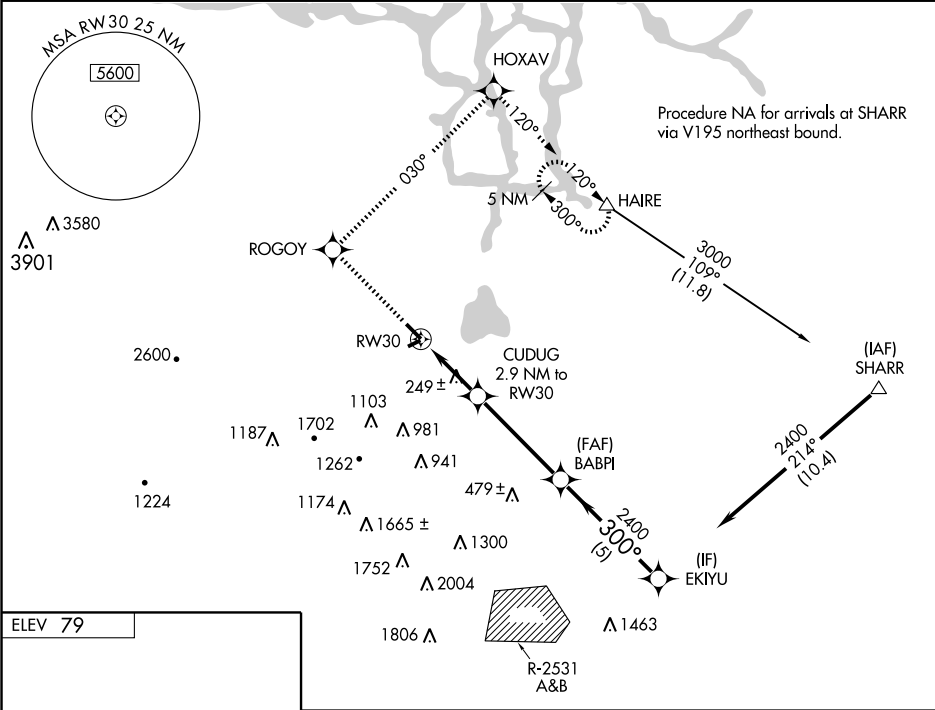
BYRON (C83)

WAAS CH 65902 W30A	APP CRS 300°	Rwy Idg 4500 TDZE 55 Apt Elev 79
--	------------------------	---

⚠ Circling to Rwy 5, 12 NA at night. Circling NA SW of Rwy 12-30.
⚠ NA If local altimeter setting not received, use Stockton Metropolitan altimeter setting and increase all DA/MDAs 60 feet.
⚠ W DME/DME RNP-0.3 NA.
 VDP NA when using Stockton Metropolitan altimeter setting.

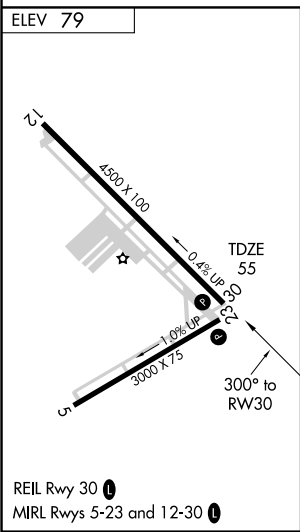
MISSED APPROACH: Climb to 3000 direct ROGOY and right turn via 030° track to HOXAV and right turn via 120° track to HAIRE and hold, continue climb-in-hold to 3000.

AWOS-3 123.775	NORCAL APP CON 123.85 278.3	UNICOM 123.05 (CTAF) 0
--------------------------	---------------------------------------	----------------------------------



SW-2, 22 OCT 2009 to 19 NOV 2009

SW-2, 22 OCT 2009 to 19 NOV 2009



3000	ROGOY	HOXAV	HAIRE	VGSI and RNAV glidepath not coincident.
↑	✧	↷ 030° track	↷ 120° track	△
*RNAV only	CUDUG 2.9 NM to RW30	BABPI	EKIYU	Procedure Turn NA
	* 1.1 NM to RW30	← 300°	← 2400	GS 3.00° TCH 40
	1.1 NM	1.8 NM	4.2 NM	5 NM
CATEGORY	A	B	C	D
LPV DA	305-1	250 (300-1)		NA
LNAV MDA	500-1	445 (500-1)		NA
CIRCLING	520-1 441 (500-1)	540-1 461 (500-1)		NA