

DUNNELLON, FLORIDA

AL-9138 (FAA)

VORTAC OCF <b>113.7</b> Chan <b>84</b>	APP CRS <b>229°</b>	Rwy Idg TDZE Apt Elev	<b>4941</b> <b>66</b> <b>66</b>
--	------------------------	-----------------------------	---------------------------------------

# VOR/DME RWY 23

DUNNELLON/MARRION CO & PARK OF COMMERCE (X35)

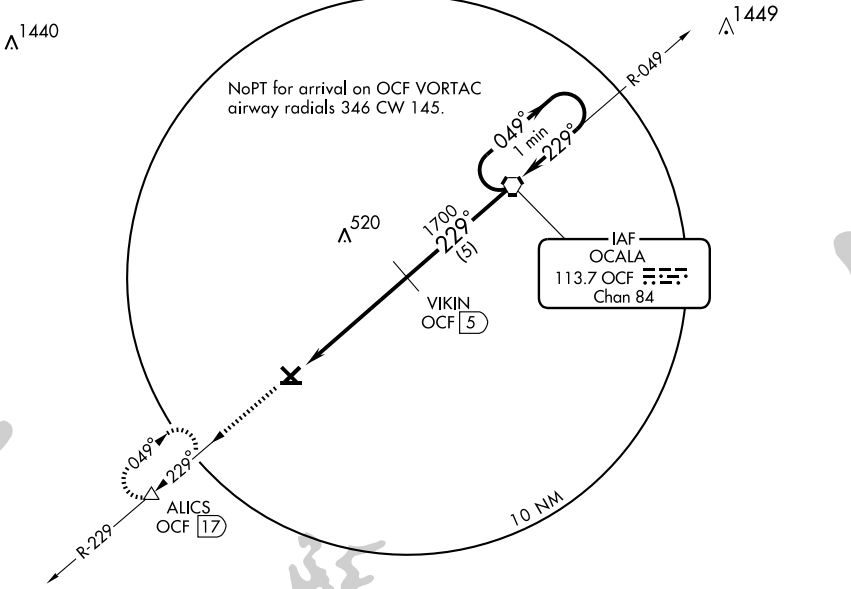
**▲** NA Use Ocala altimeter setting.

MISSED APPROACH: Climb to 3000 via OCF R-229 to ALICS/OCF 17 DME and hold.

OCALA AWOS-3  
**128.125**

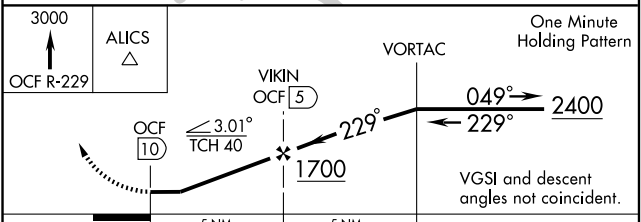
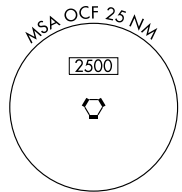
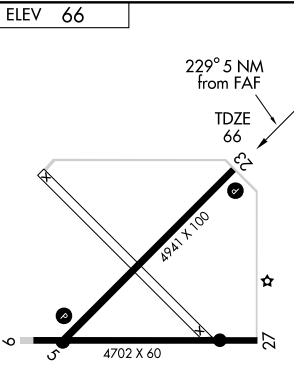
JACKSONVILLE APP CON  
**118.6 251.15**

UNICOM  
**122.8 (CTAF) 0**



SE-3, 22 OCT 2009 to 19 NOV 2009

SE-3, 22 OCT 2009 to 19 NOV 2009



CATEGORY	A	B	C	D
S-23	540-1	474 (500-1)	540-1½ 474 (500-1½)	540-1½ 474 (500-1½)
CIRCLING	540-1	474 (500-1)	540-1½ 474 (500-1½)	620-2 554 (600-2)

MIRL Rwy 5-23 **0**  
DUNNELLON, FLORIDA  
Amdt 1B 09267

DUNNELLON/MARRION CO & PARK OF COMMERCE (X35)  
29°04'N-82°23'W  
**VOR/DME RWY 23**