

RNAV (GPS) RWY 6

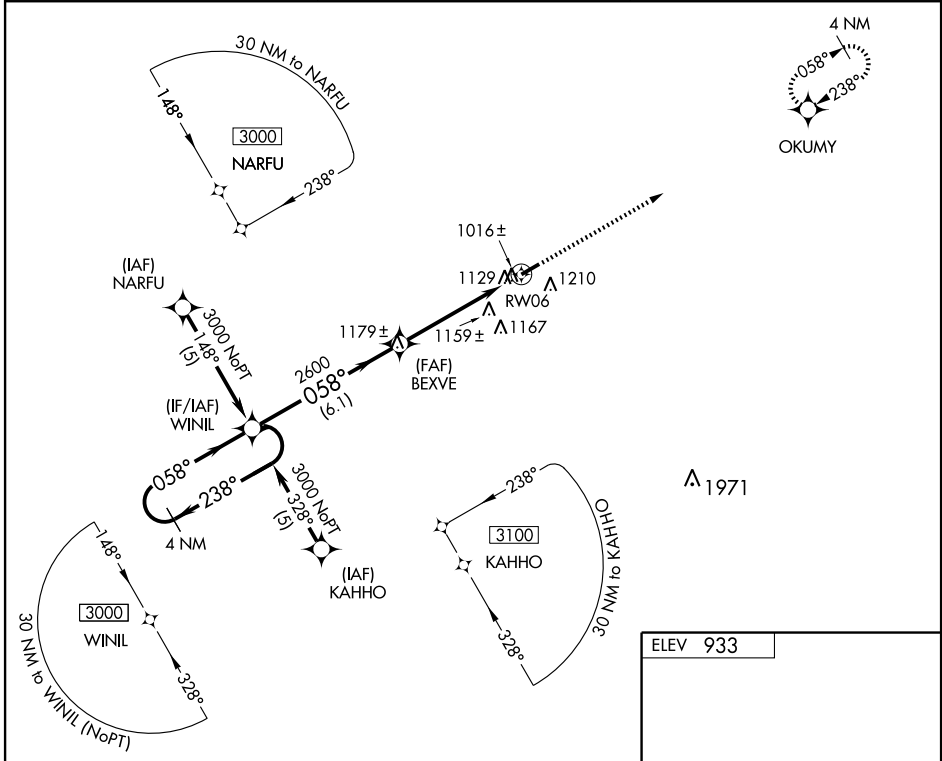
SULLIVAN RGNL (UUU)

WAAS CH 82414 W06A	APP CRS 058°	Rwy ldg 4499 TDZE 933 Apt Elev 933
----------------------------------------	------------------------	---------------------------------------------------------------

▼ Circling to Rwy 24 NA at night. For uncompensated Baro-VNAV systems, LNAV/VNAV NA below -16°C (4°F) or above 54°C (130°F). DME/DME RNP-0.3 NA. Visibility reduction by helicopters NA.
▲ NA Baro-VNAV and VDP NA when using Rolla National altimeter setting. When local altimeter setting not received, use Rolla National altimeter setting and increase all DA 98 feet and all MDA 100 feet, increase LPV Cat A and B visibility ½ mile and LNAV/VNAV Cat A and B visibility ¼ mile.

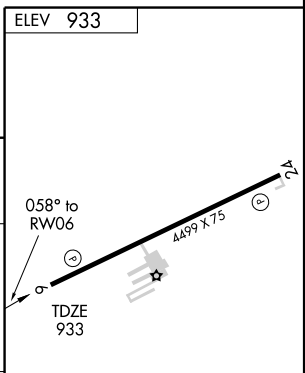
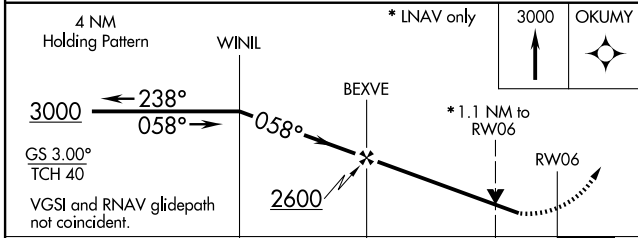
MISSED APPROACH:
Climb to 3000 direct OKUMY and hold.

AWOS-3 119.375	KANSAS CITY CENTER 128.35 284.67	UNICOM 122.7 (CTAF) 0
--------------------------	--------------------------------------------	---------------------------------



NC-3, 22 OCT 2009 to 19 NOV 2009

NC-3, 22 OCT 2009 to 19 NOV 2009



CATEGORY	A	B	C	D
LPV DA	1236-1	303 (400-1)		NA
LNAV/VNAV DA	1488-2	555 (600-2)		NA
LNAV MDA	1420-1	487 (500-1)		NA
CIRCLING	1520-1	587 (600-1)		NA

MIRL Rwy 6-24 0