

RNAV (GPS) RWY 24

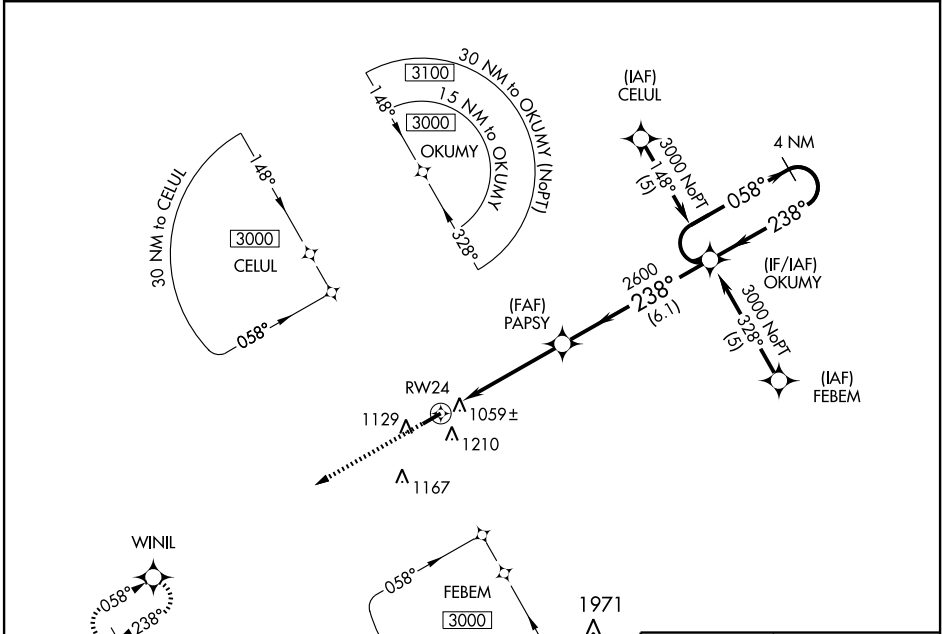
SULLIVAN RGNL (UUV)

WAAS CH 72714 W24A	APP CRS 238°	Rwy ldg 4499 TDZE 928 Apt Elev 933
--	------------------------	---

▼ Straight-in minimums NA at night. Circling to Rwy 24 NA at night. Baro-VNAV NA when using Rolla National altimeter setting. For uncompensated Baro-VNAV systems, LNAV/VNAV NA below -16°C (4°F) or above 54°C (130°F). DME/DME RNP-0.3 NA. Visibility reduction by helicopters NA. ▲ NA When local altimeter setting not received, use Rolla National altimeter setting and increase all DA 98 feet and all MDA 100 feet, increase LPV and LNAV/VNAV Cat A and B visibility ¼ mile.

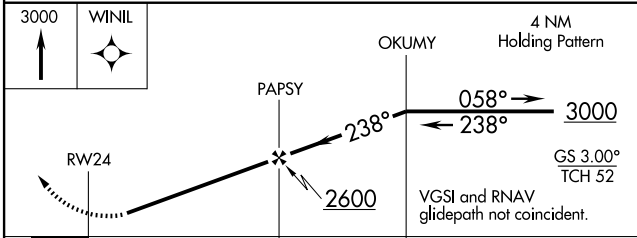
MISSED APPROACH: Climb to 3000 direct WINIL and hold.

AWOS-3 119.375	KANSAS CITY CENTER 128.35 284.67	UNICOM 122.7 (CTAF) 0
--------------------------	--	---------------------------------



NC-3, 22 OCT 2009 to 19 NOV 2009

NC-3, 22 OCT 2009 to 19 NOV 2009



CATEGORY	A	B	C	D
LPV DA	1178-1	250 (300-1)		NA
LNAV/VNAV DA	1392-1¾	464 (500-1¾)		NA
LNAV MDA	1460-1	532 (600-1)		NA
CIRCLING	1520-1	587 (600-1)		NA

