

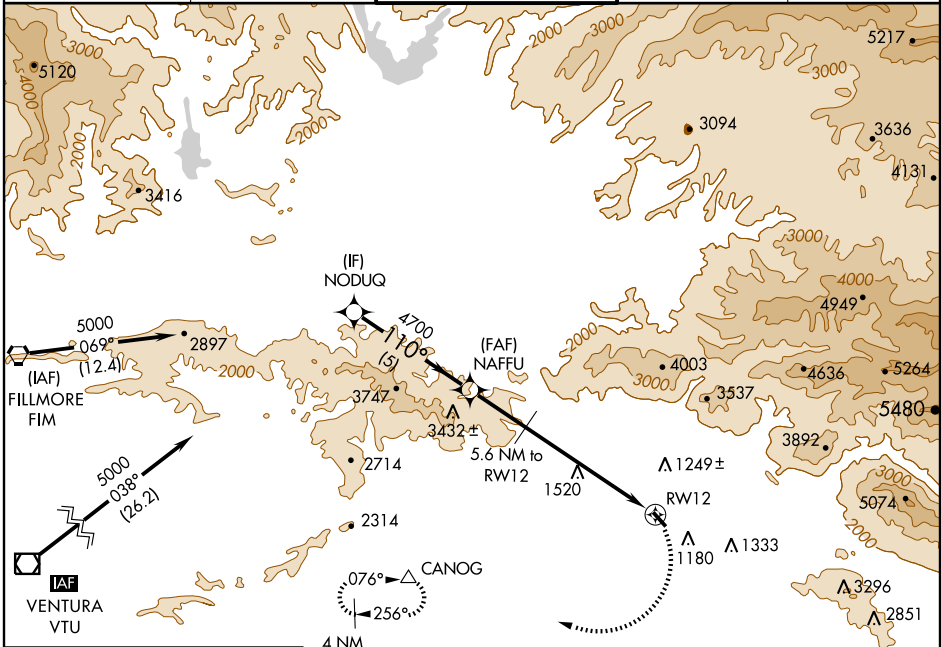
# RNAV (GPS)-C

LOS ANGELES/WHITEMAN (WHP)

APP CRS	Rwy Idg	N/A
110°	TDZE	N/A
	Apt Elev	1003

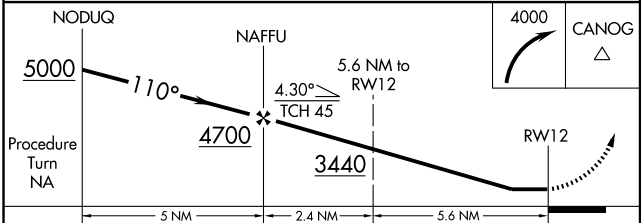
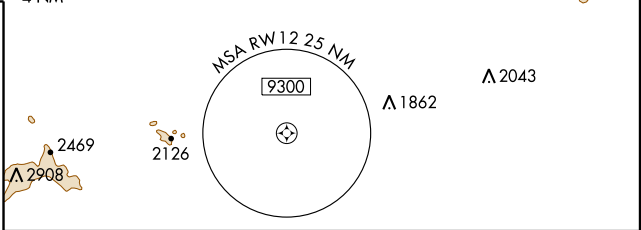
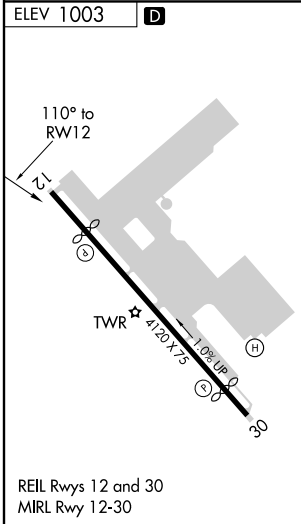
When control tower closed, use Burbank altimeter setting.  
**NA** IAF ARM APPROACH MODE PRIOR TO IAF.  
 MISSED APPROACH: Climbing right turn to 4000 direct CANOG and hold.  
 GPS or RNP-0.3 required. DME/DME RNP-0.3 NA.

ATIS <b>132.1</b>	SOCAL APP CON <b>134.2 338.2</b>	WHITEMAN TOWER * <b>135.0</b> (CTAF)	GND CON <b>125.0</b>	UNICOM <b>122.95</b>
----------------------	-------------------------------------	---	-------------------------	-------------------------



SW-3, 22 OCT 2009 to 19 NOV 2009

SW-3, 22 OCT 2009 to 19 NOV 2009



CATEGORY	A	B	C	D
CIRCLING	1900-1¼	897 (900-1¼)	1900-2¾ 897 (900-2¾)	NA