


# RNAV (GPS) RWY 5

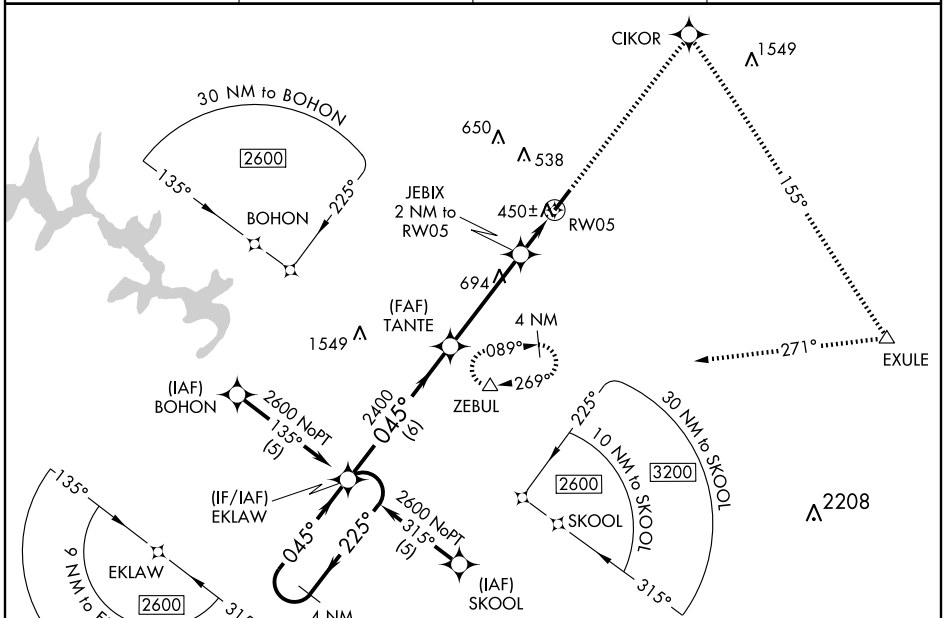
LOUISBURG/FRANKLIN COUNTY (LHZ)

WAAS CH <b>90103</b> <b>W05A</b>	APP CRS <b>045°</b>	Rwy Idg <b>5498</b> TDZE <b>366</b> Apt Elev <b>369</b>
--	------------------------	---

**▲** If local altimeter setting not received, use Raleigh-Durham altimeter setting and increase DA to 725 feet; increase all MDAs 80 feet.  
VDP NA when using Raleigh-Durham altimeter setting.  
DME/DME RNP-0.3 NA.  
When VGSI inoperative, circling Rwy 23 NA at night.

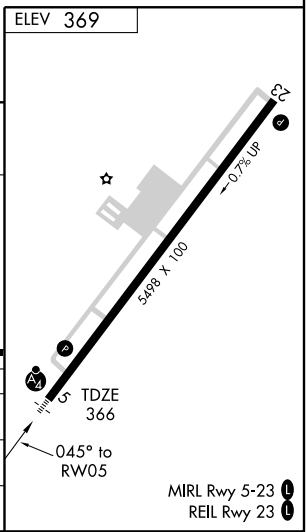
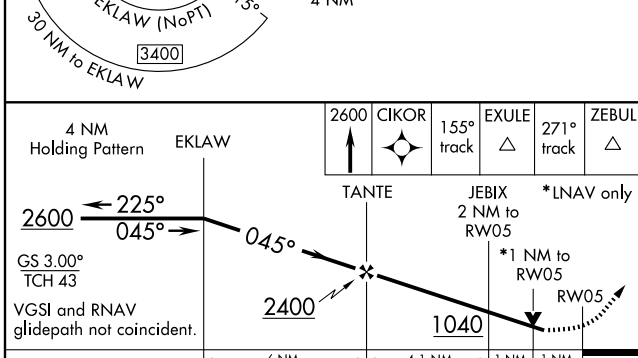
**MALSF**  
 MISSED APPROACH: Climb to 2600 direct CIKOR and via 155° track to EXULE and via 271° track to ZEBUL and hold.

AWOS-3 <b>118.325</b>	RALEIGH APP CON <b>125.3 380.05</b>	GCO <b>135.075</b>	UNICOM <b>123.0 (CTAF)</b> 
--------------------------	--	-----------------------	---




SE-2, 22 OCT 2009 to 19 NOV 2009

SE-2, 22 OCT 2009 to 19 NOV 2009



CATEGORY	A	B	C	D
LPV DA		660-1 294 (300-1)		
RNAV MDA		700-1 334 (400-1)		
CIRCLING	800-1 431 (500-1)	820-1 451 (500-1)	820-1½ 451 (500-1½)	920-2 551 (600-2)

MIRL Rwy 5-23   
REIL Rwy 23 