

RNAV (GPS) RWY 23

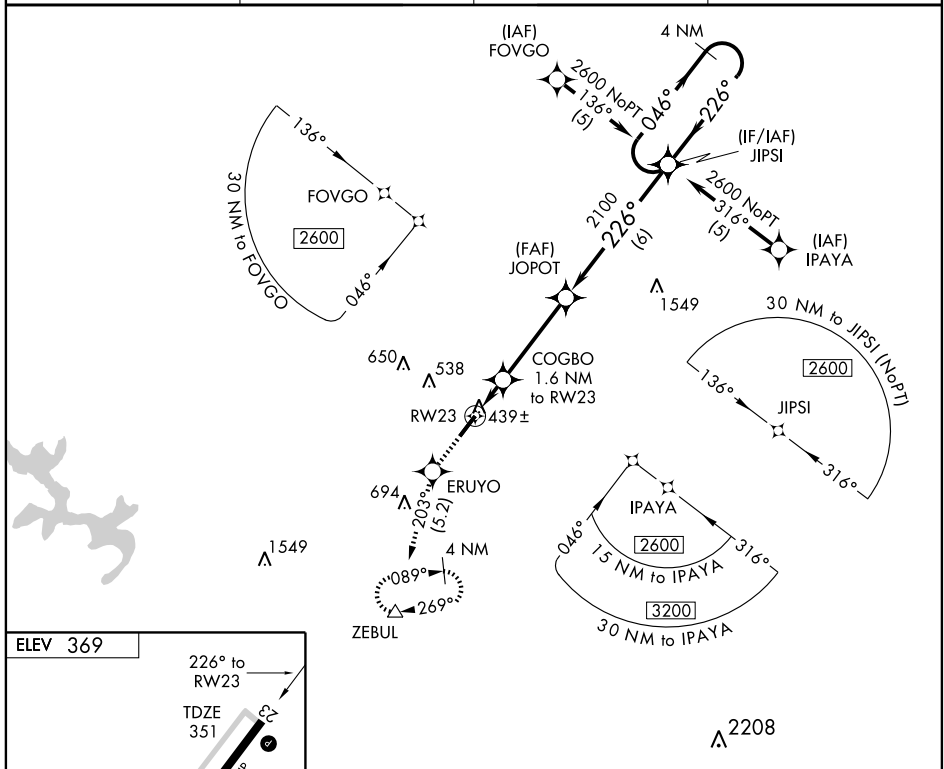
LOUISBURG/FRANKLIN COUNTY (LHZ)

APP CRS	Rwy Idg	5498
226°	TDZE	351
	Apt Elev	369

⚠ If local altimeter setting not received, use Raleigh-Durham altimeter setting and increase all MDAs 80 feet.
 When VGSI inoperative, procedure NA at night.
 DME/DME RNP-0.3 NA.

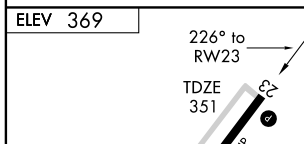
MISSED APPROACH: Climb to 2600 direct ERUYO and via 203° track to ZEBUL and hold.

AWOS-3 118.325	RALEIGH APP CON 125.3 380.05	GCO 135.075	UNICOM 123.0 (CTAF) 0
--------------------------	--	-----------------------	---------------------------------



SE-2, 22 OCT 2009 to 19 NOV 2009

SE-2, 22 OCT 2009 to 19 NOV 2009



2600	ERUYO	203° track	ZEBUL	
				4 NM Holding Pattern
	COGBO 1.6 NM to RW23	JOPOT	JIPSI	2600
	RW23	2100		046° → ← 226°
	900	≤ 3.05° TCH 46		
	1.6 NM	3.7 NM	6 NM	
CATEGORY	A	B	C	D
LNAV MDA	700-1 349 (400-1)			700-1¼ 349 (400-1¼)
CIRCLING	800-1 431 (500-1)	820-1 451 (500-1)	820-1½ 451 (500-1½)	920-2 551 (600-2)