

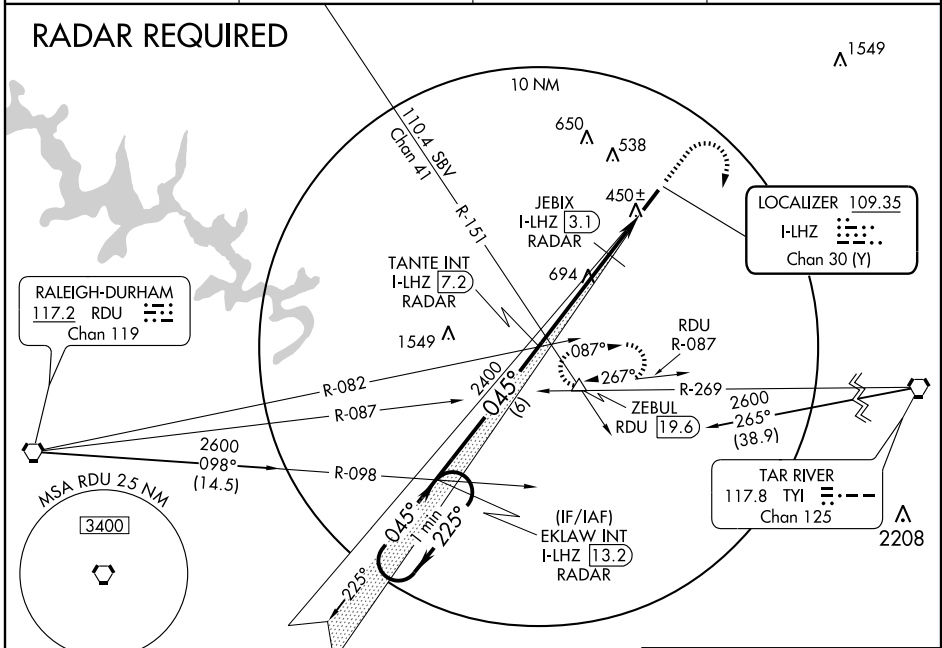
LOC/DME I-LHZ	APP CRS	Rwy Idg	5498
109.35	045°	TDZE	366
Chan 30 (Y)		Apt Elev	369

ILS or LOC RWY 5
LOUISBURG/ FRANKLIN COUNTY (LHZ)

NA If local altimeter setting not received, use Raleigh-Durham altimeter setting; increase DH to 681 feet; increase all MDAs 80 feet. VDP NA with Raleigh-Durham altimeter setting.

MALSF MISSED APPROACH: Climb to 1400 then climbing right turn to 2600 via heading 190° and RDU R-087 to ZEBUL INT/RDU 19.6 DME and hold.

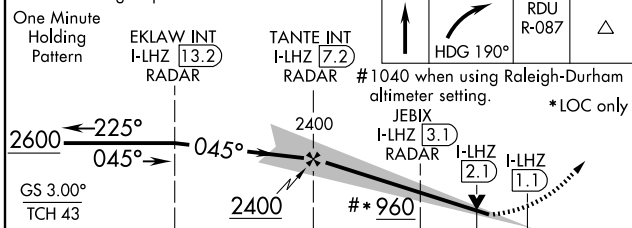
AWOS-3 118.325	RALEIGH APP CON 125.3 380.05	GCO 135.075	UNICOM 123.0 (CTAF) 0
--------------------------	--	-----------------------	---------------------------------



SE-2, 22 OCT 2009 to 19 NOV 2009

SE-2, 22 OCT 2009 to 19 NOV 2009

VGSI and ILS glidepath not coincident.



CATEGORY	A	B	C	D
S-ILS 5		616- ³ / ₄	250 (300- ³ / ₄)	
S-LOC 5	960-1	594 (600-1)	960-1 ¹ / ₂ 594 (600-1 ¹ / ₂)	960-1 ³ / ₄ 594 (600-1 ³ / ₄)
CIRCLING	960-1	591 (600-1)	960-1 ¹ / ₂ 591 (600-1 ¹ / ₂)	960-2 591 (600-2)
JEBIX FIX MINIMUMS				
S-LOC 5	700-1 334 (400-1)			
CIRCLING	800-1 431 (500-1)	820-1 451 (500-1)	820-1 ¹ / ₂ 451 (500-1 ¹ / ₂)	920-2 551 (600-2)

