

EASTPORT, MAINE

AL-9125 (FAA)

RNAV (GPS) RWY 33

EASTPORT MUNI (EPM)

APP CRS 326°	Rwy Idg 4000
	TDZE 45
	Apt Elev 45

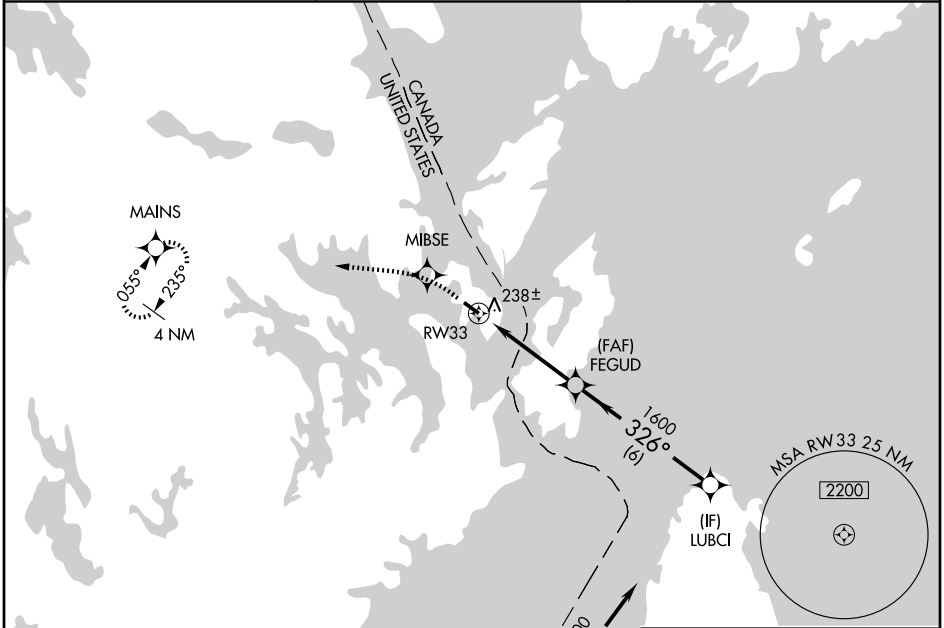
▽ DME/DME RNP-0.3 NA.
△ NA If local altimeter setting not received, use Hancock County-Bar Harbor altimeter setting and increase all MDAs 160 feet.
 VDP NA with Hancock County-Bar Harbor altimeter setting.

MISSED APPROACH: Climb to 4000 direct MIBSE and via 295° track to MAINS and hold.

AWOS-A
260

BOSTON CENTER
124.25 290.5

UNICOM
122.8 (CTAF) **①**

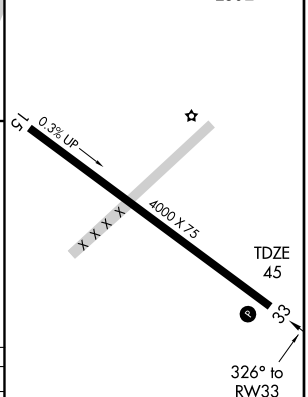


NE-1, 22 OCT 2009 to 19 NOV 2009

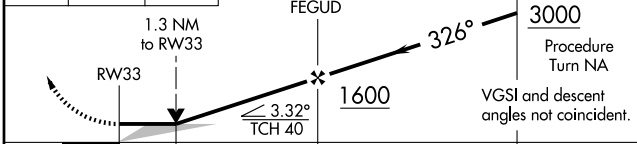
NE-1, 22 OCT 2009 to 19 NOV 2009

ELEV	45
------	----

△ 250±



4000	MIBSE	MAINS
↑	295° TRK	



CATEGORY	A	B	C	D
RNAV MDA	500-1	455 (500-1)	500-1¼ 455 (500-1¼)	500-1½ 455 (500-1½)
CIRCLING	580-1	535 (600-1)	580-1½ 535 (600-1½)	600-2 555 (600-2)

MIRL Rwy 15-33 **①**
 REIL Rwy 15 and 33 **①**

EASTPORT, MAINE
 Orig 08157

44°55'N - 67°01'W

RNAV (GPS) RWY 33

EASTPORT MUNI (EPM)